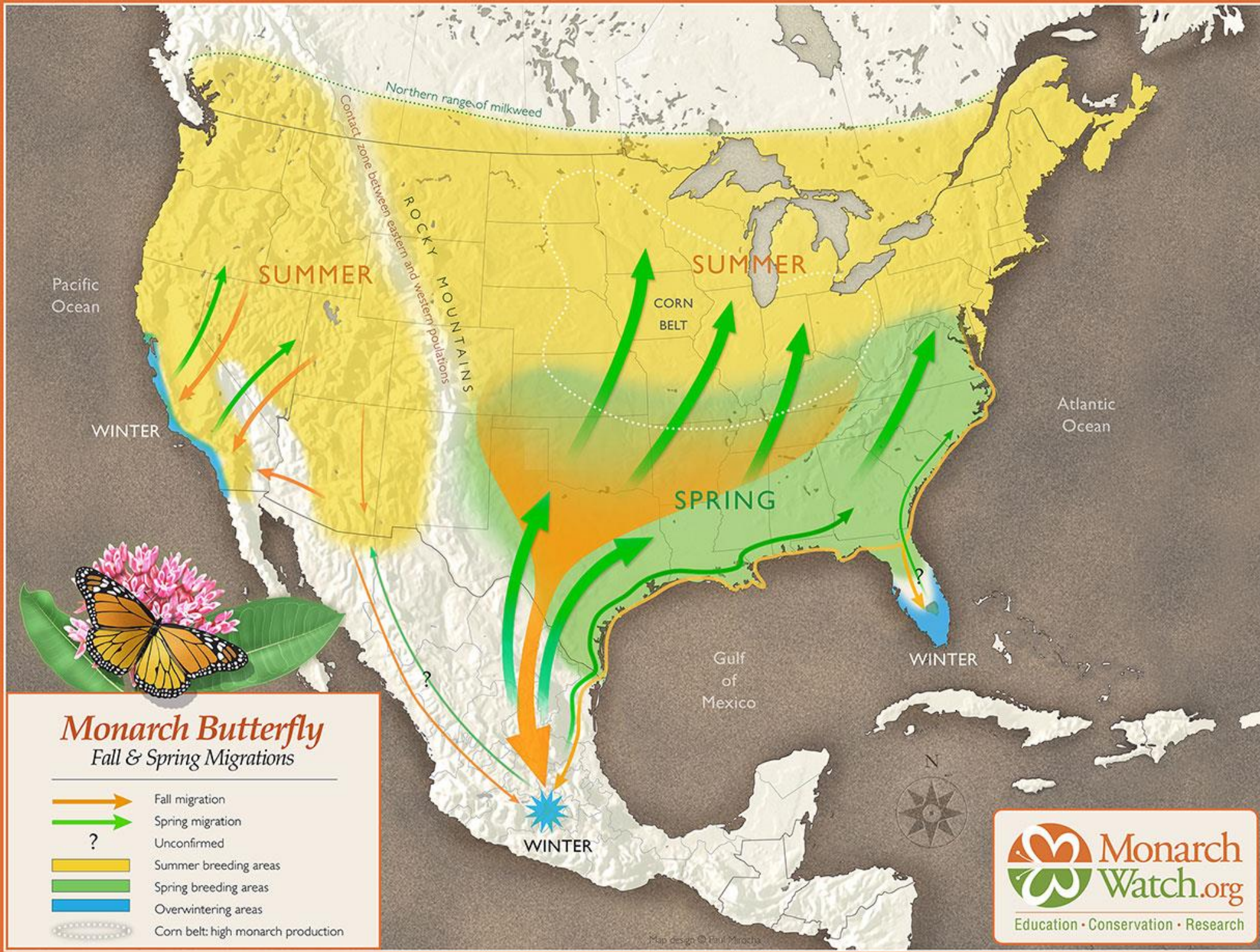




# MONARCHS: STATUS AND TAGGING

ORLEY R. “CHIP” TAYLOR  
DIRECTOR  
MONARCH WATCH  
UNIVERSITY OF KANSAS

The data shown are very general and should not be considered definitive since there is a deeper analysis underway.



# Monarch population development: A stage specific model

Winter in Mexico –Nov – Ap

Spring return through Mexico to Texas Feb-Ap

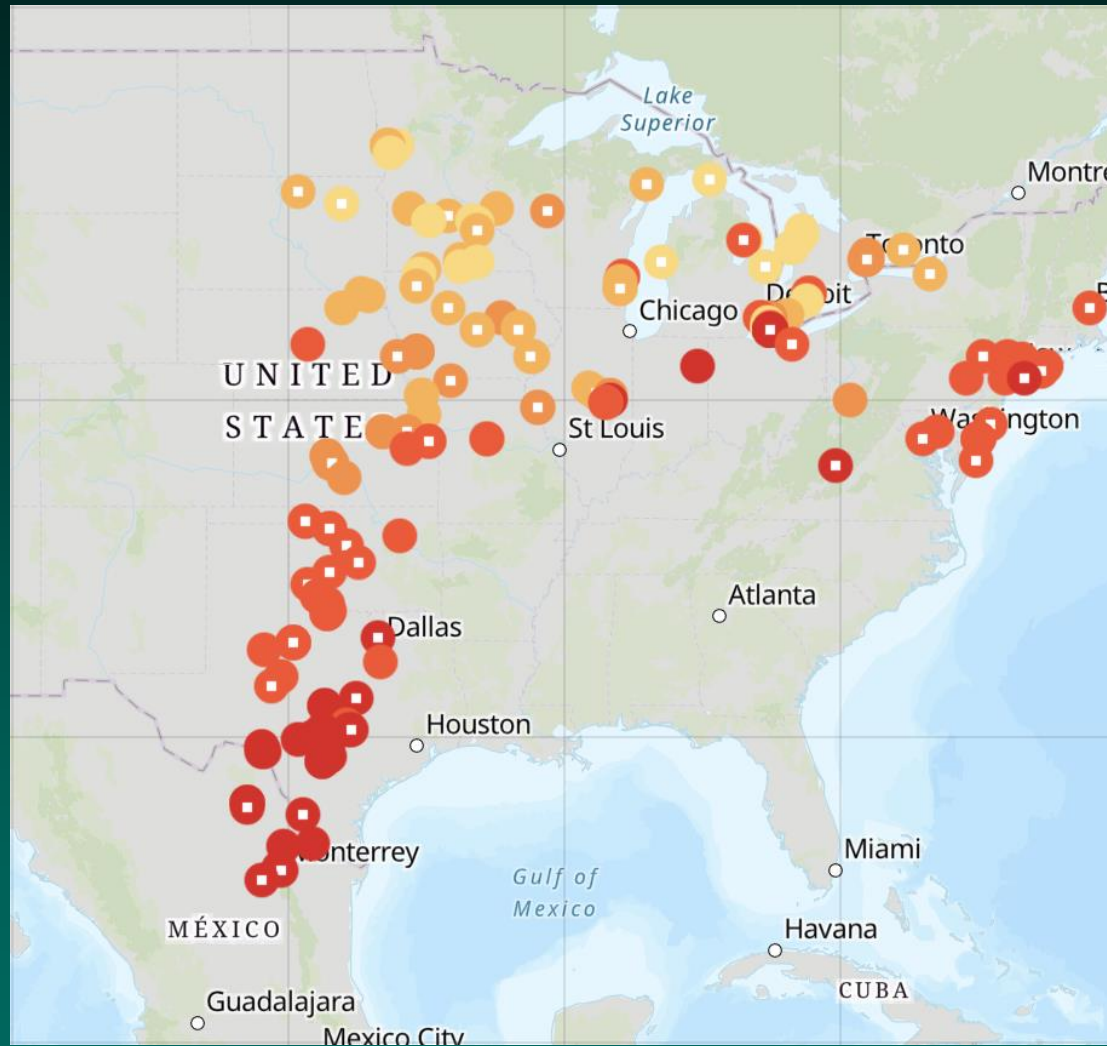
Development first generation South Region Mar –Ap

Recolonization northern areas by first generation May – Jn

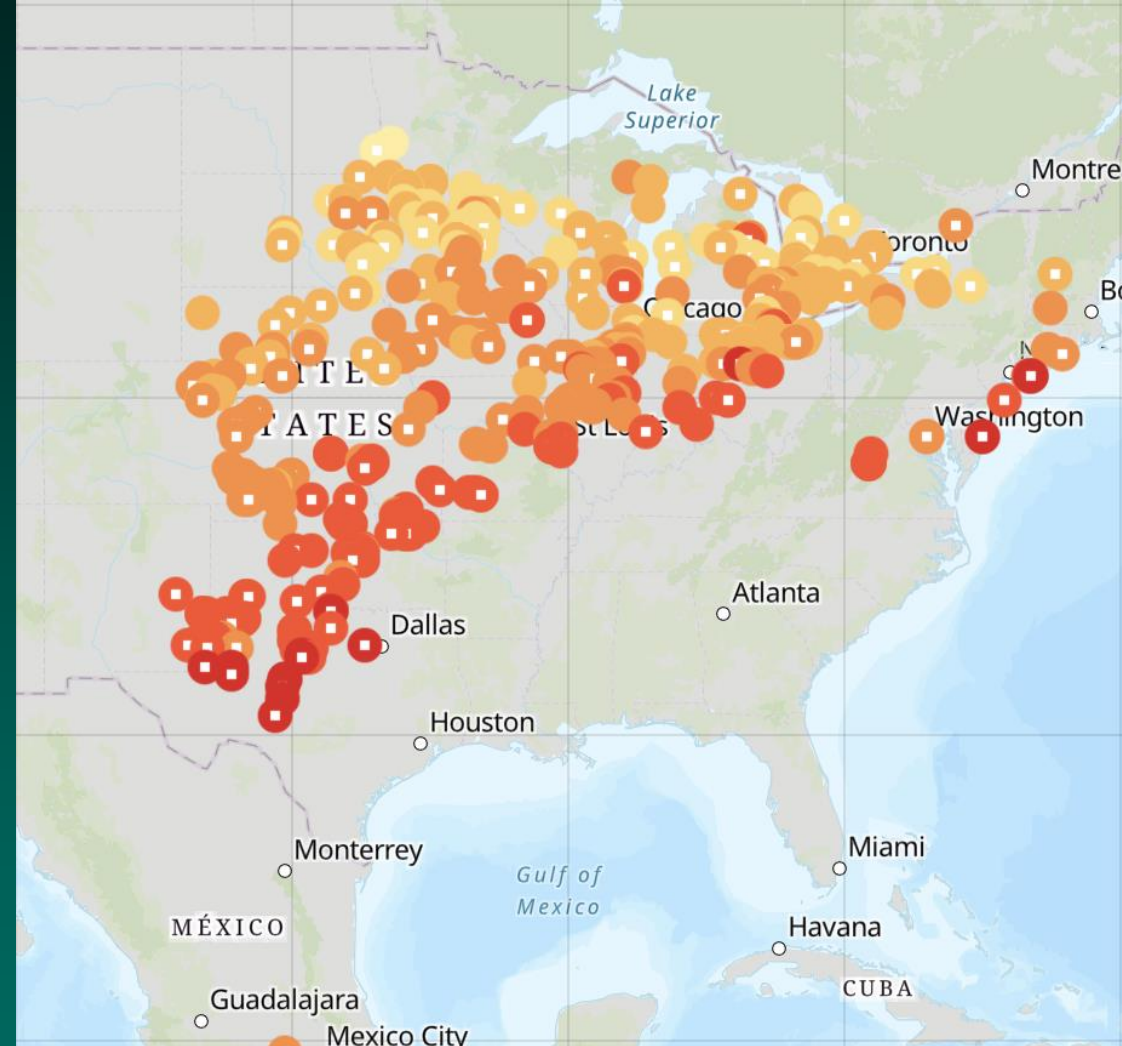
Summer population growth Jn-Aug

Fall migration Aug-Dec

## Fall roosts reported 2017 vs 2018

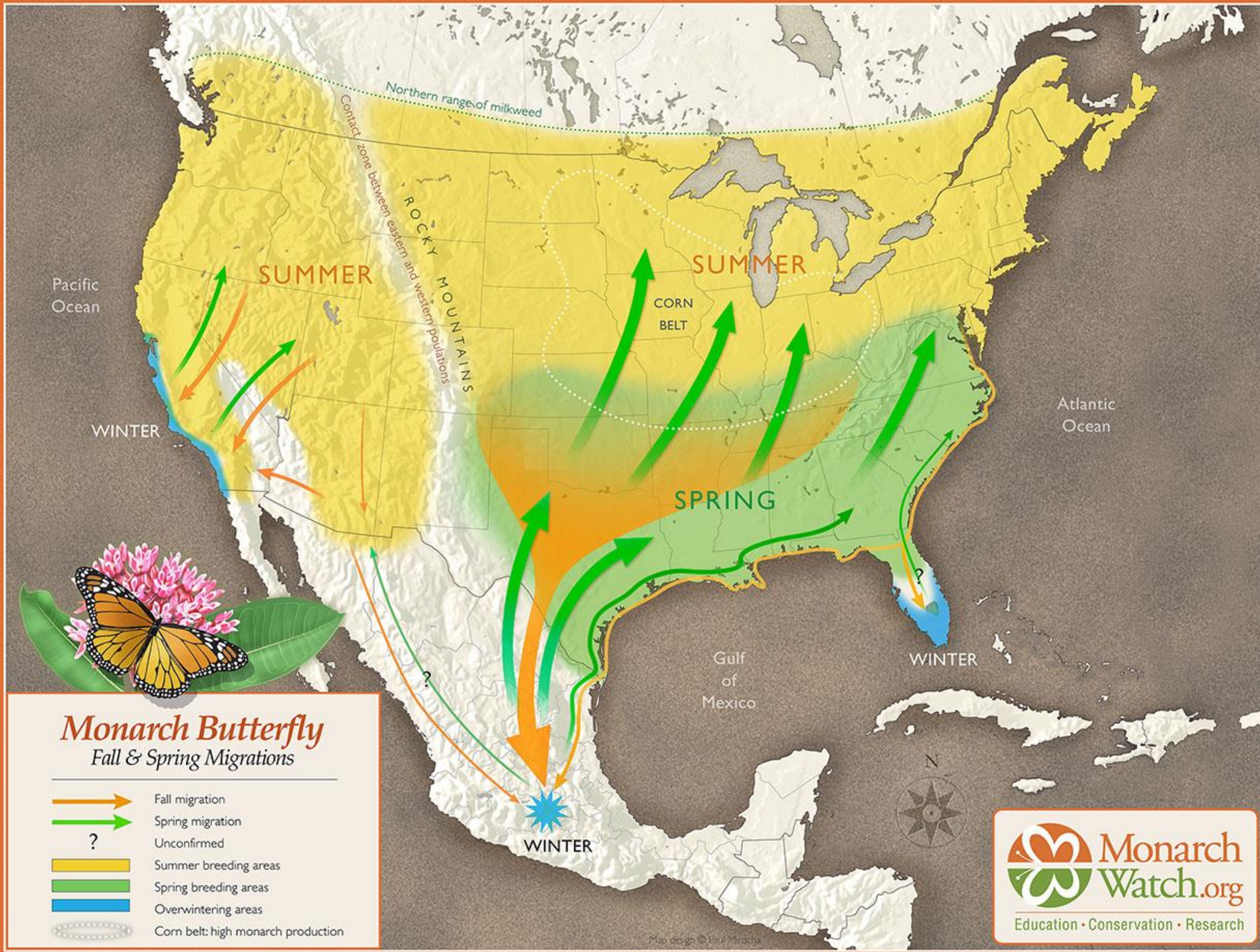


2017 OW= 2.48 hectares

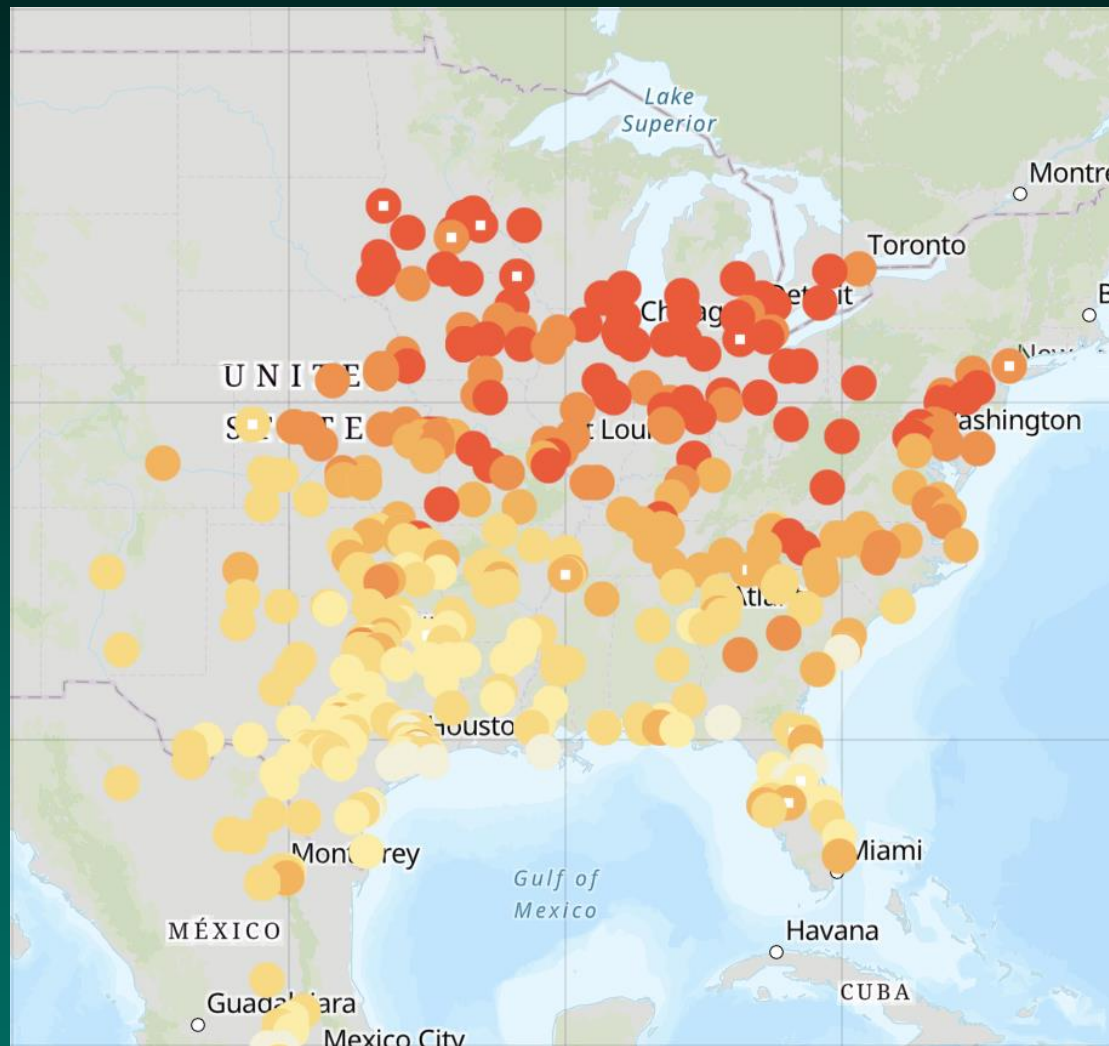


2018 OW = +/-5 hectares

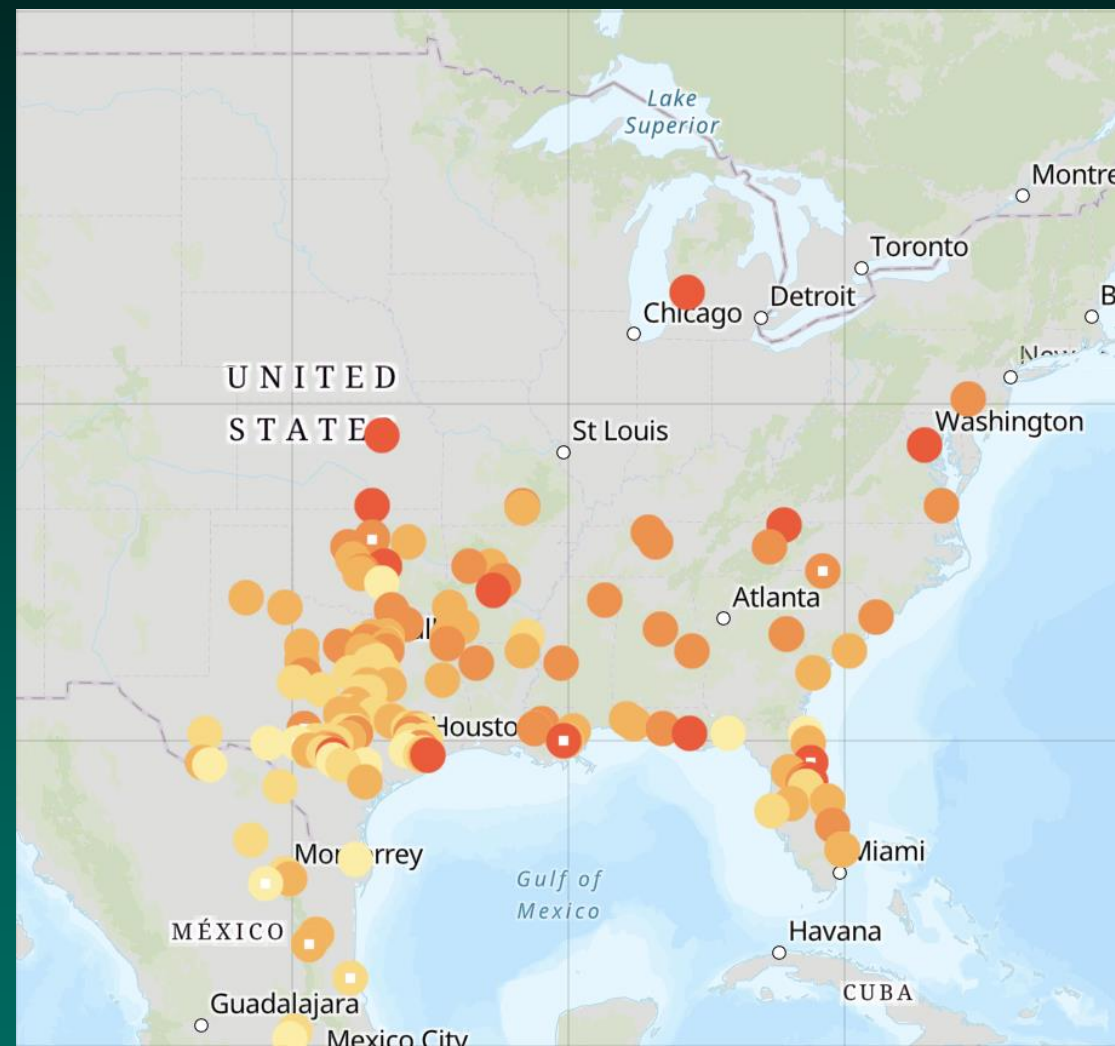
Data from [journeynorth.org](http://journeynorth.org)



# First sightings of returning migrants 1 March - 2 May 2012 vs 2013



2012 - 1100 sightings     $OW = 1.19$

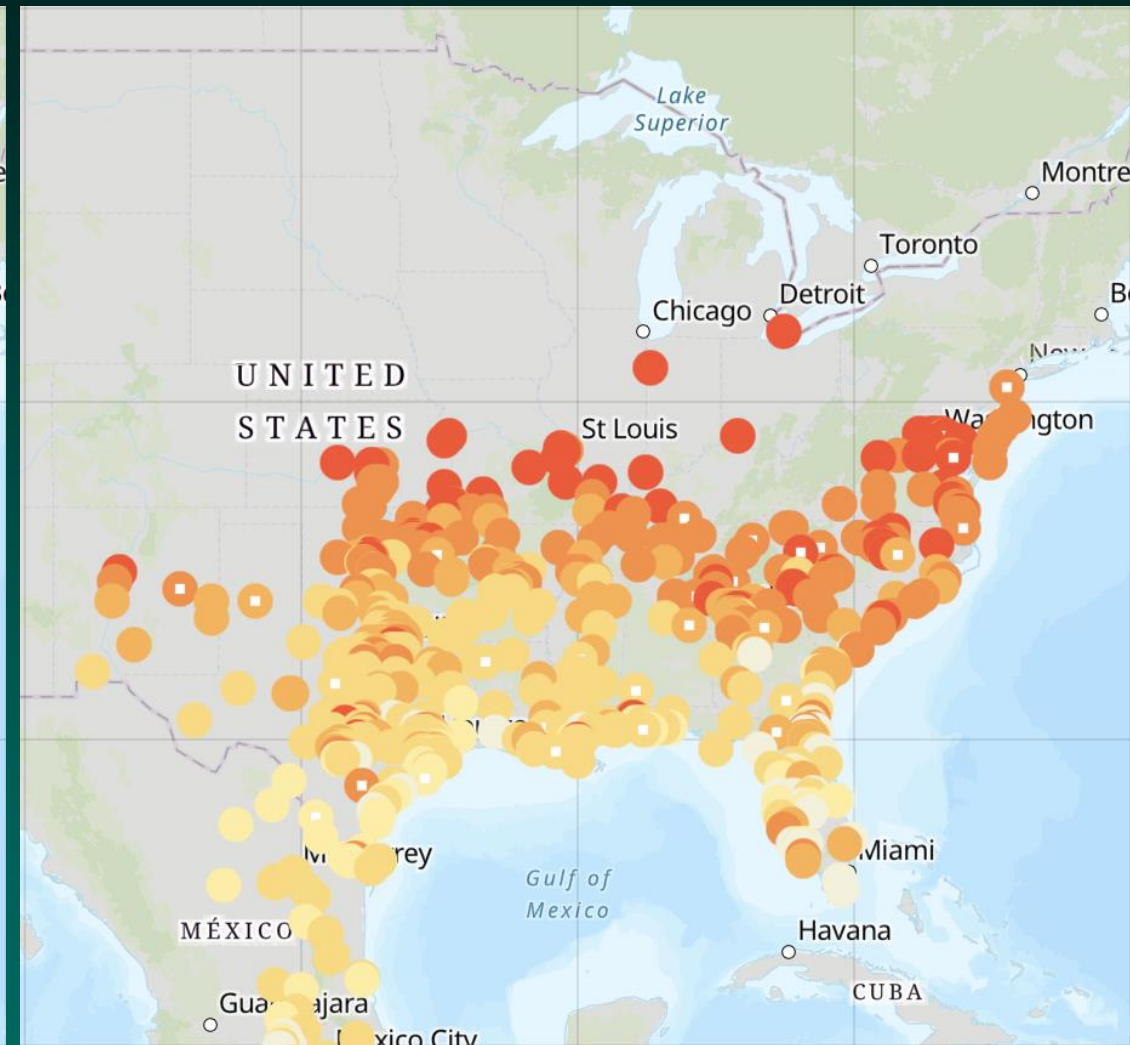
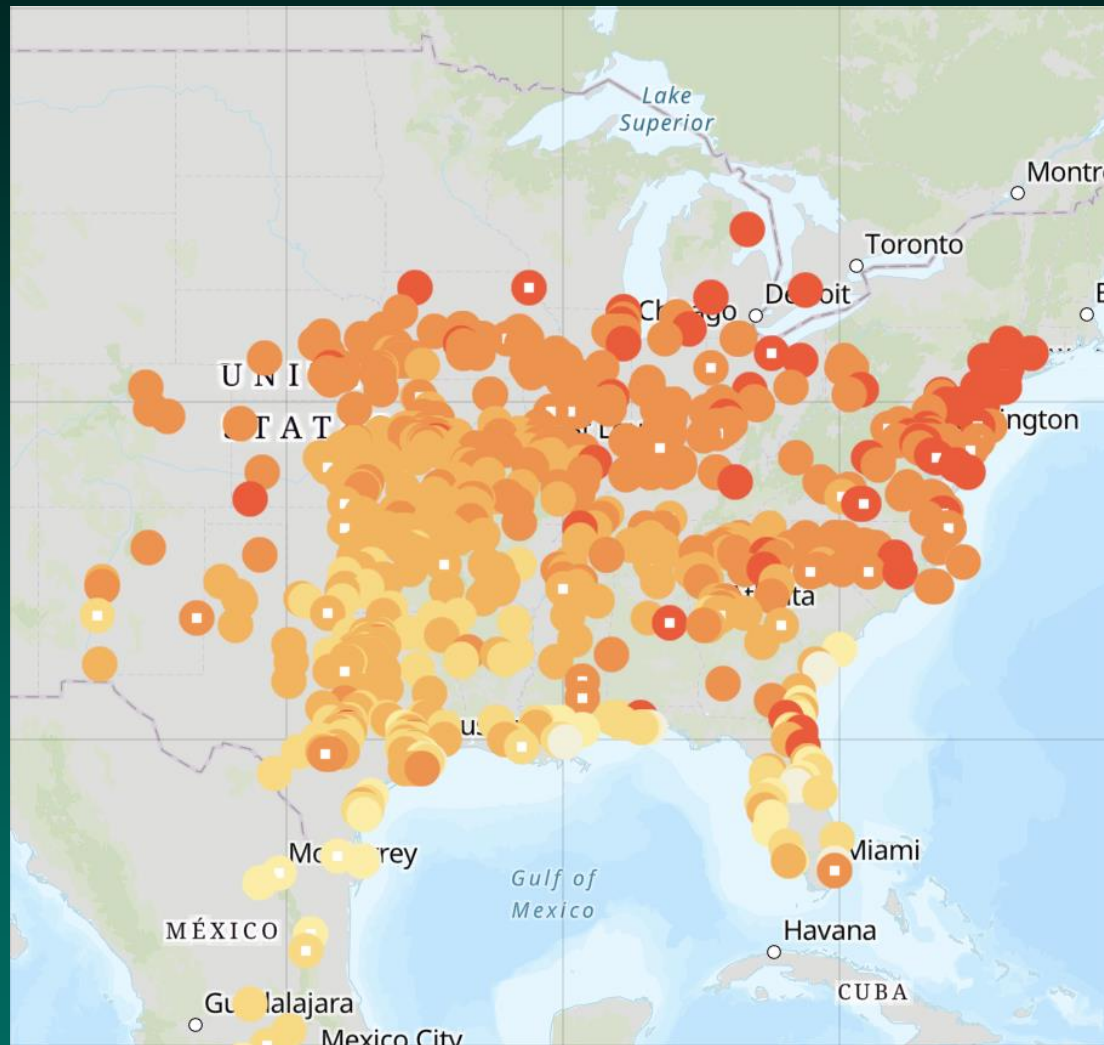


2013 – 450 sightings     $OW = 0.67$

Data from [journeynorth.org](http://journeynorth.org)

# First sightings of returning migrants 1 March – 2 May

2017 vs 2018



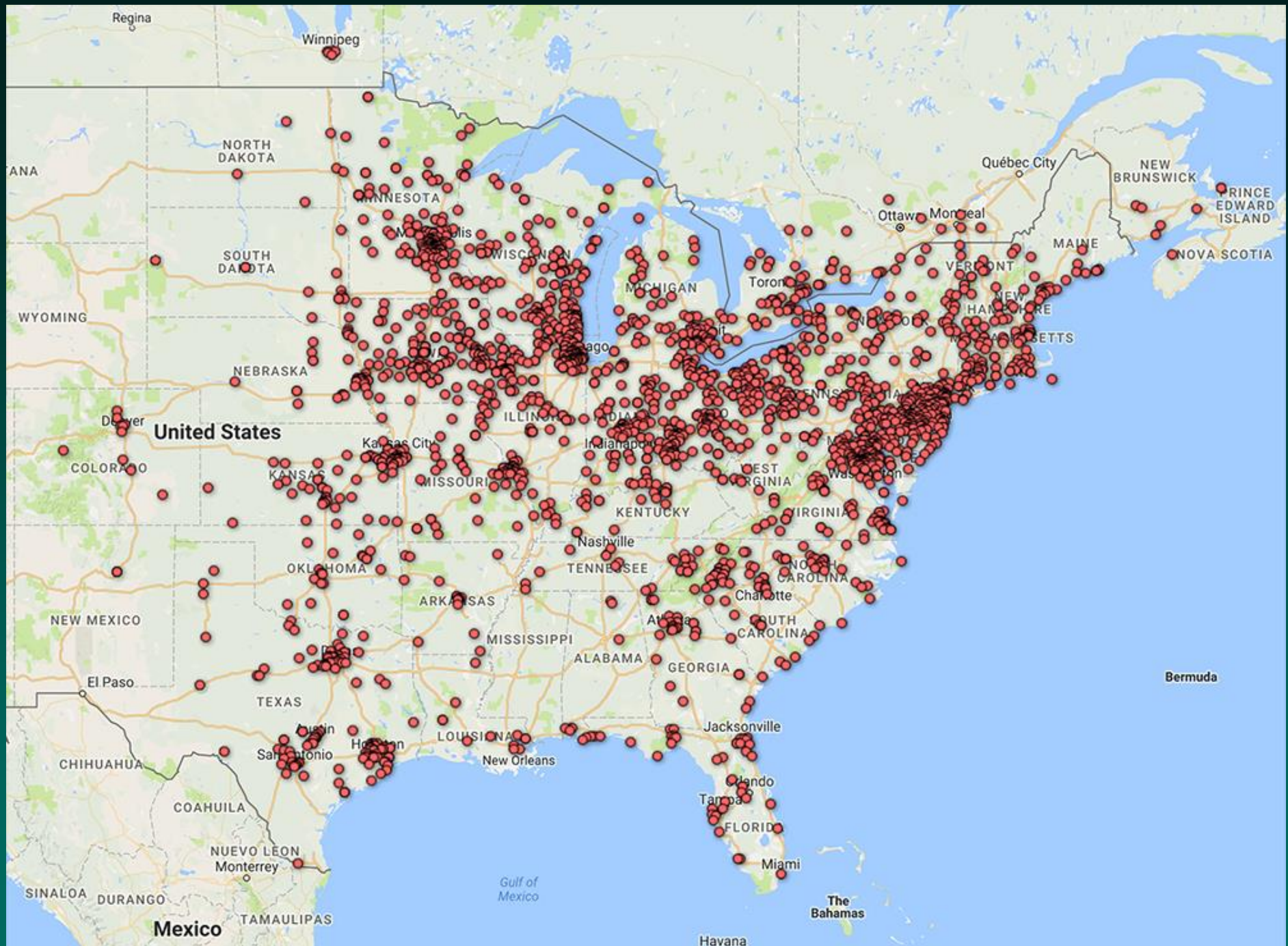
2017 – 1900 sightings      OW = 2.48

2018 – 1400 sightings      OW = ?

Data from [journeynorth.org](http://journeynorth.org)







Distribution of >220,000 monarch tags to >2250 recipients in 2015





Mail to  
LFB  
Box 6F  
24595 VA  
USA  
193635

Mail to  
LFB  
Box 6F  
24595 VA  
USA  
193635

# SUN ANGLE OR ALTITUDE ANGLE

ANGLE OF THE SUN ABOVE HORIZON AT SOLAR NOON  
REACHES PEAK ON 21 JUNE AND THEN DECLINES  
RATE OF CHANGE IN SA APPROACHES 0 AT 20N IN DEC

# MIGRATION AND SUN ANGLE AT SOLAR NOON

MIGRATION APPEARS TO BEGIN WHEN SA IS 57-56

MIGRATION APPEARS TO END WHEN SA IS 47-46

PEAK OF THE MIGRATION OCCURS WHEN SA IS 49 - 50

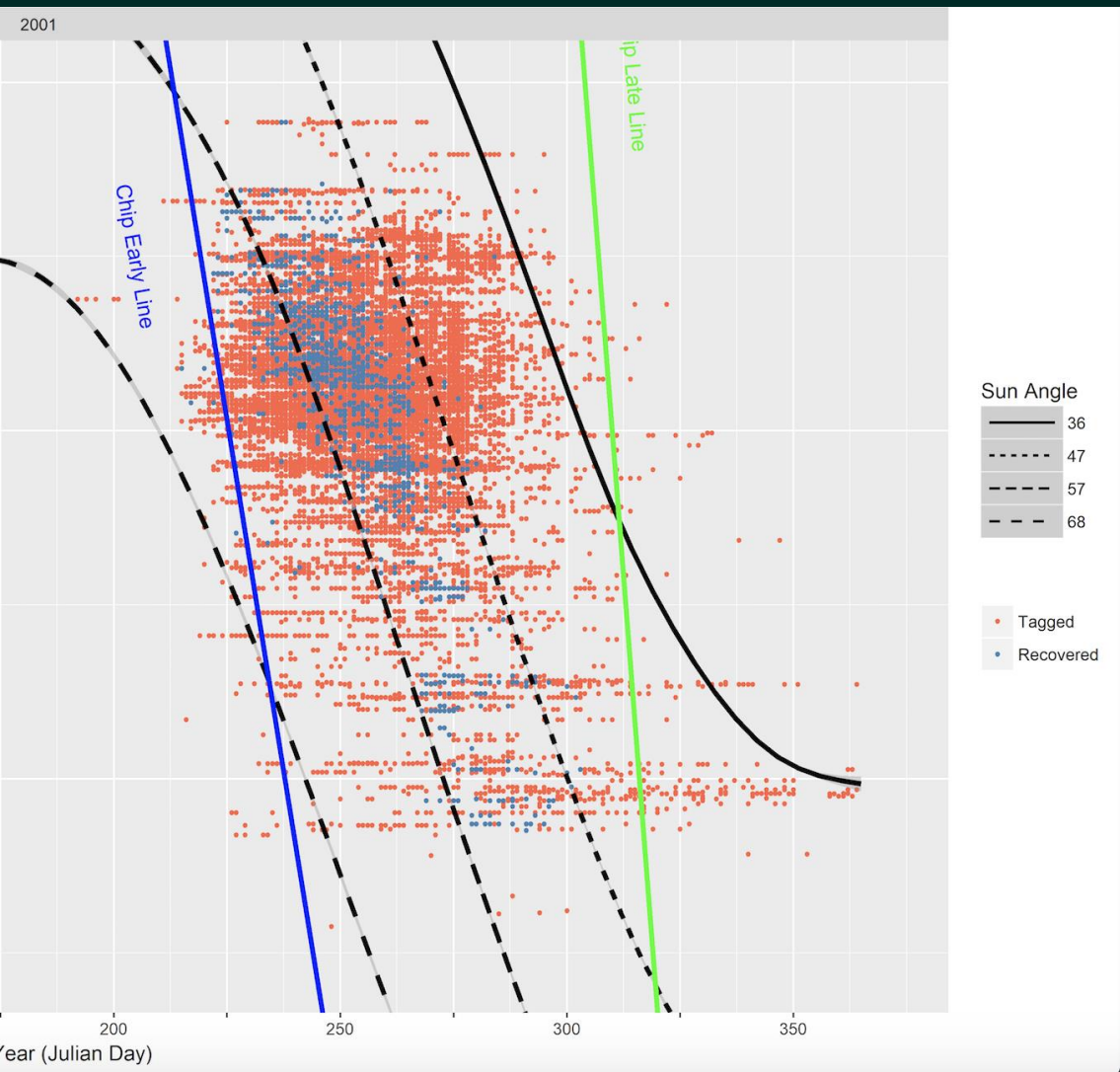
WHEN THINKING ABOUT SA:

REMEMBER HIGH VALUES ARE EARLY IN THE SEASON  
AND LOW VALUES ARE LATE IN THE SEASON

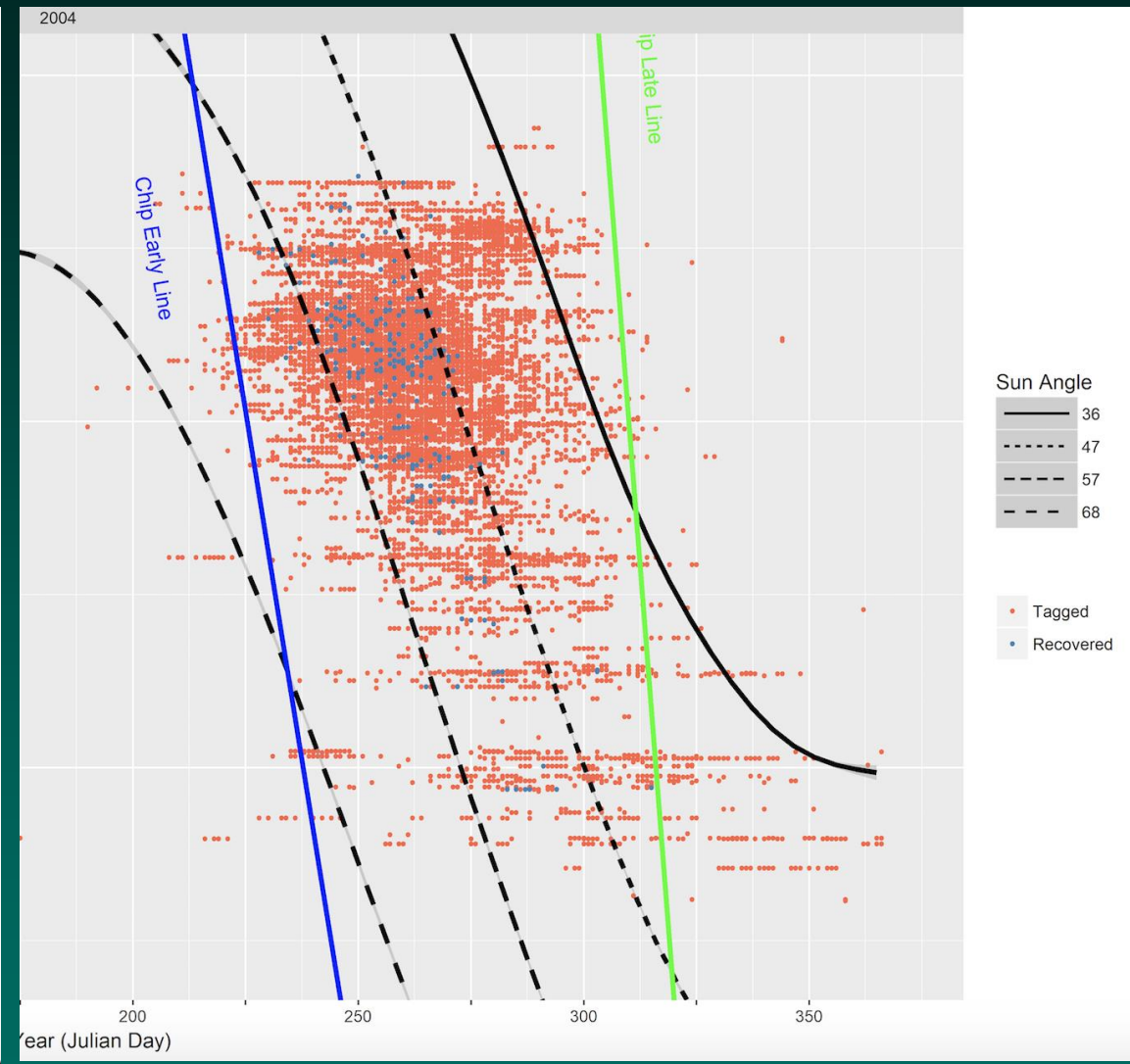
ACROSS MOST LATS, .3 DEGREES SA = 1 DAY

Earliest Migration – SA for 100-90 was 50.8

Latest Migration – SA for 100-90 was 47.5

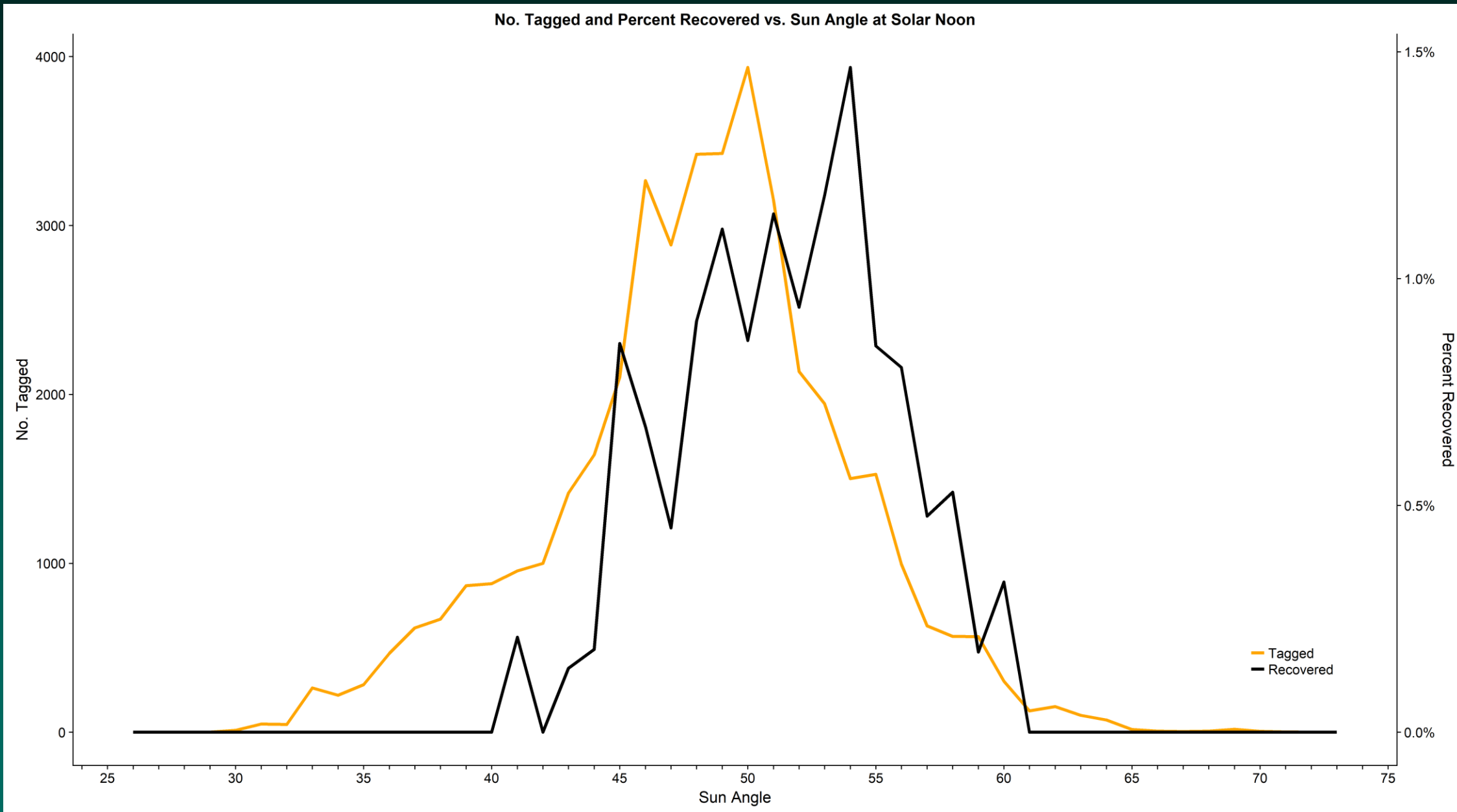


Aug 70.2 (+2.9F) Sept 58.3 (0.5F)



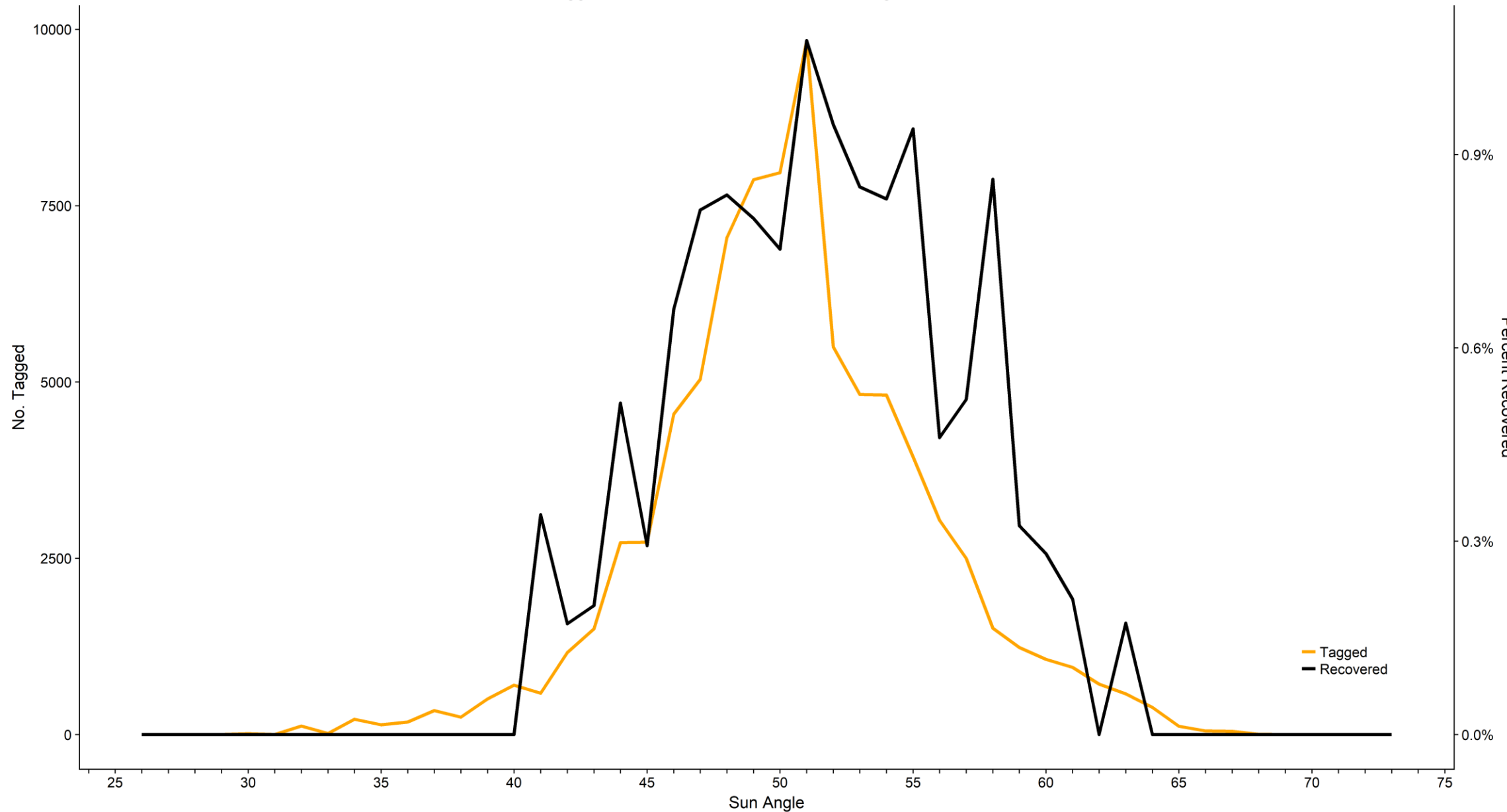
Aug 62.9 (-4.4F) Sept 63.5 (+4.7)

2001



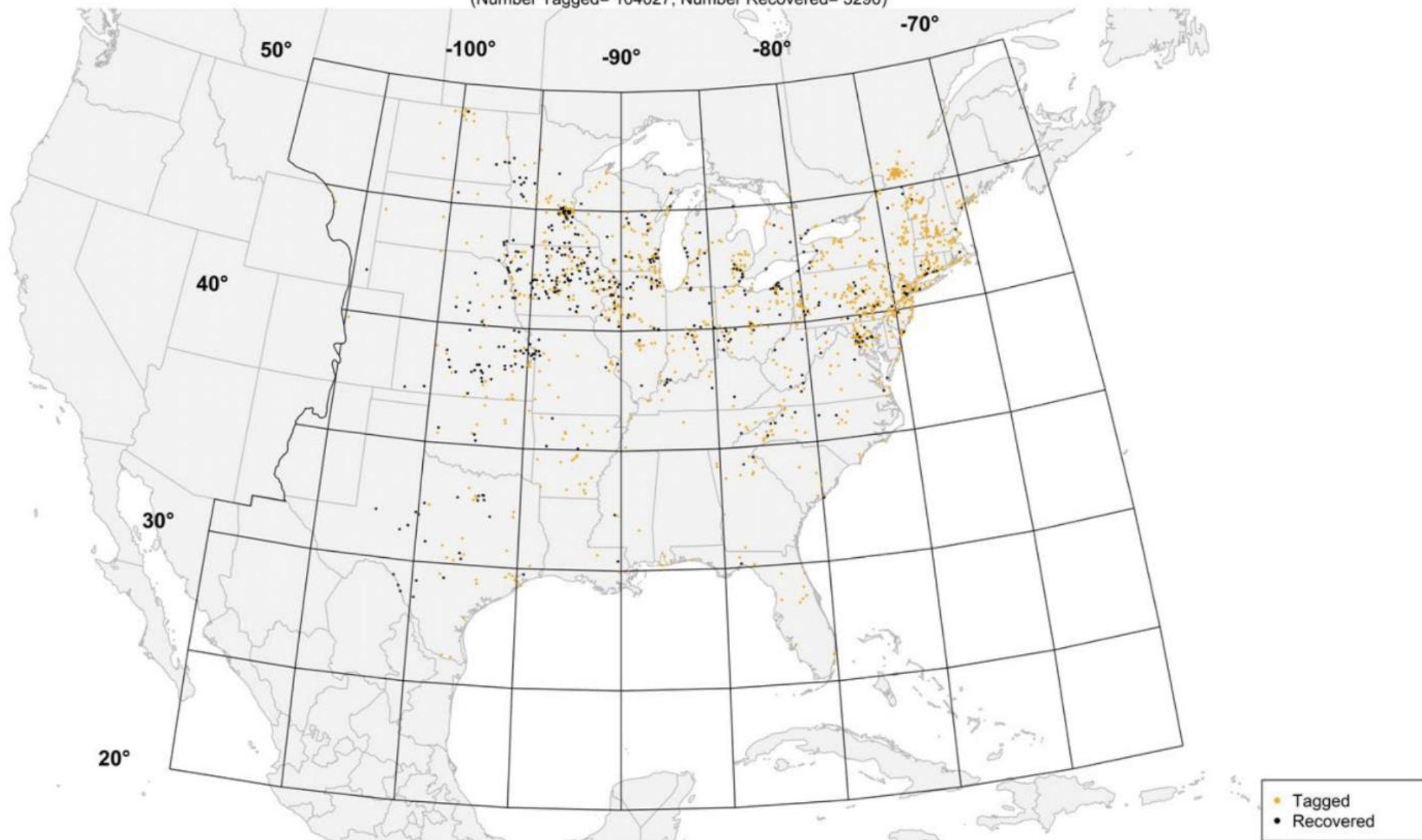
2004

No. Tagged and Percent Recovered vs. Sun Angle at Solar Noon



### Migration Window Tagging Locations by Year 2001

(Number Tagged= 104027, Number Recovered= 3290)

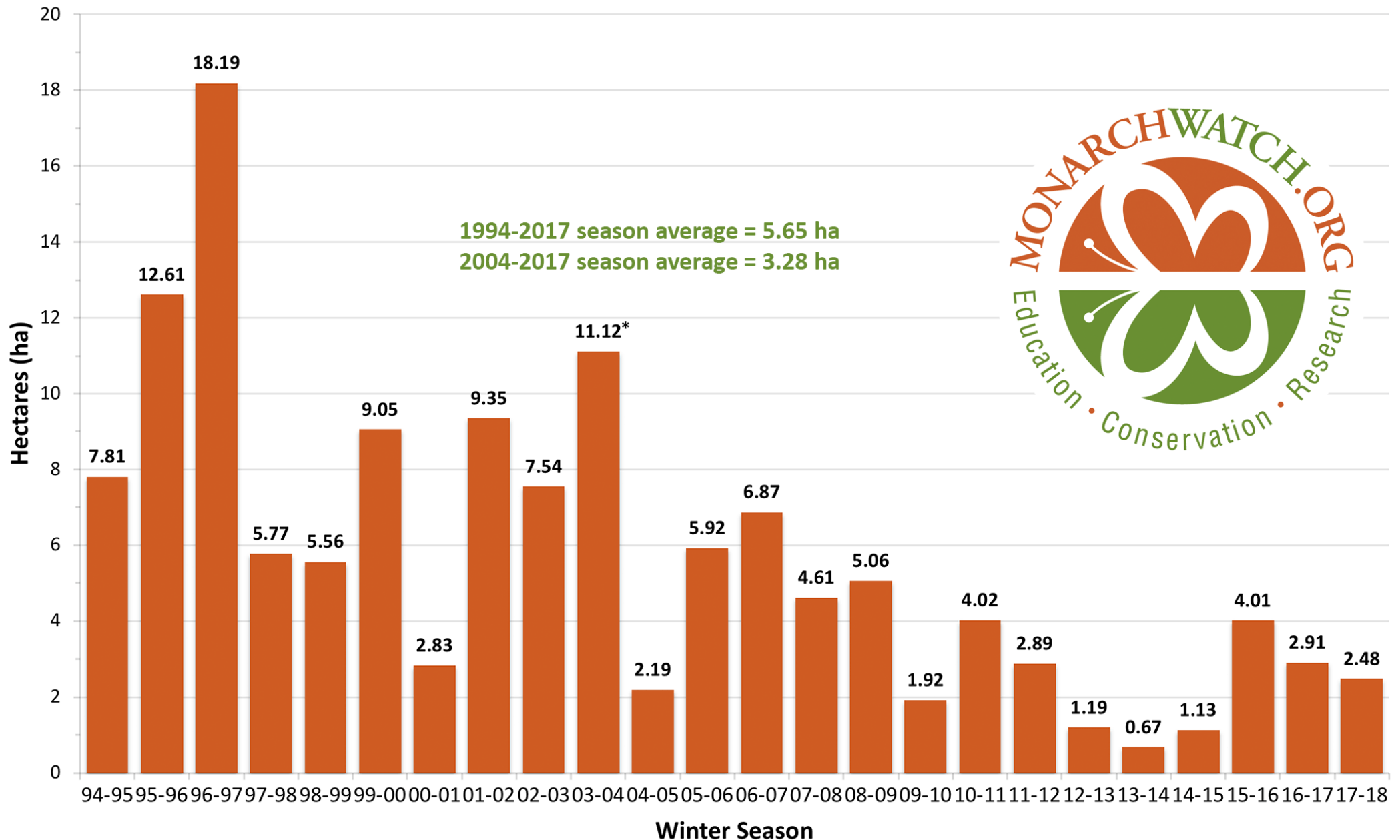


# Tagged, recovered & tags/recovery by longitude

	110-100	100-90	90-80	80-65
Tagged	0.012	0.409*	0.251	0.329
Recovered	0.035	0.675	0.194	0.094
Tags/recovery	32.5	60.7	128.7	350

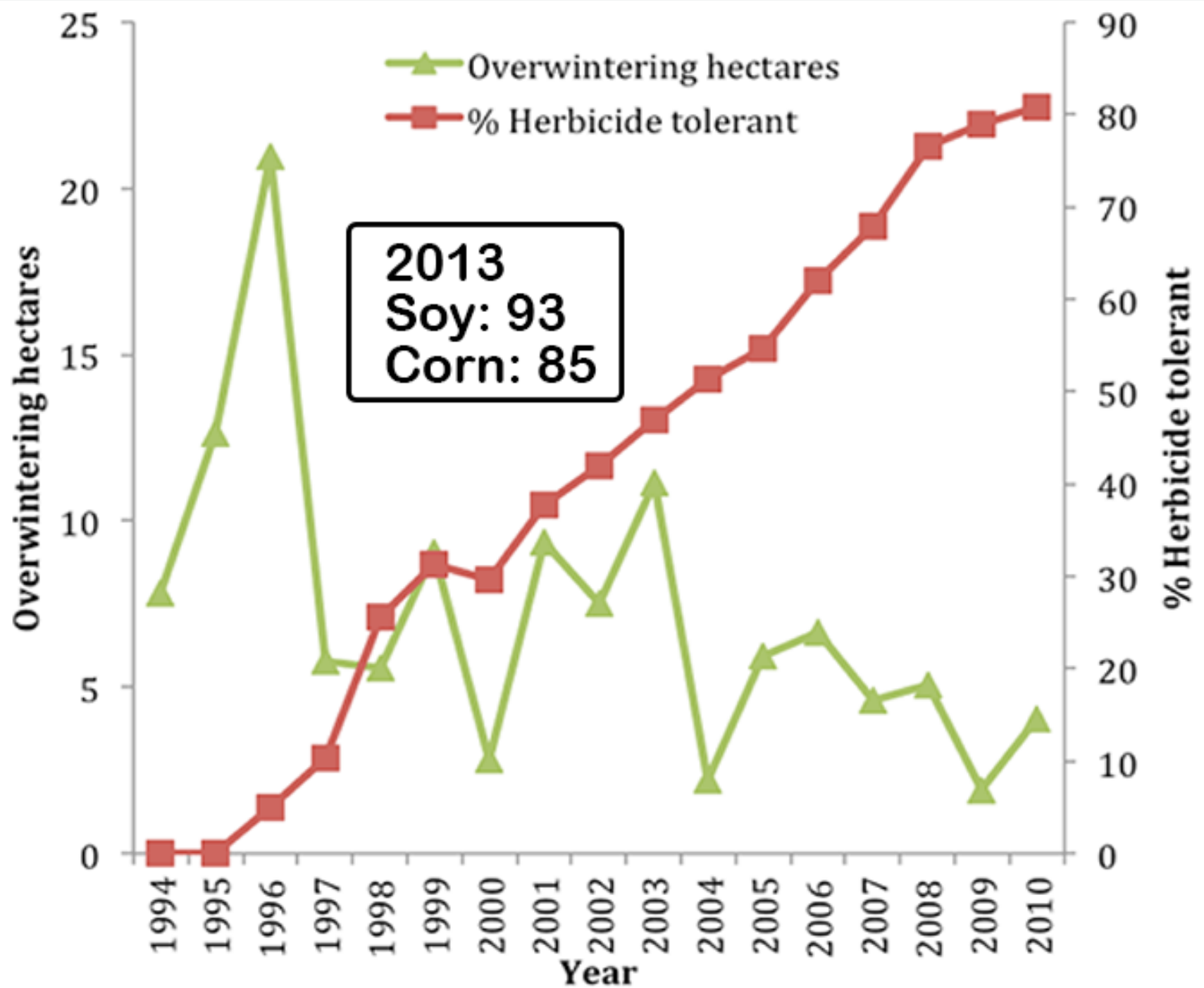
\*42.1% of the butterflies tagged accounted for 71% of the recoveries

# Total Area Occupied by Monarch Colonies at Overwintering Sites in Mexico



Data for 1994-2003 collected by personnel of the Monarch Butterfly Biosphere Reserve (MBBR) of the National Commission of Natural Protected Areas (CONANP) in Mexico. Data for 2004-2017 collected by World Wildlife Fund Mexico in coordination with the Directorate of the MBBR.

\* Represents colony sizes measured in November of 2003 before the colonies consolidated. Measures obtained in January 2004 indicated the population was much smaller, possibly 8-9 hectares. CT

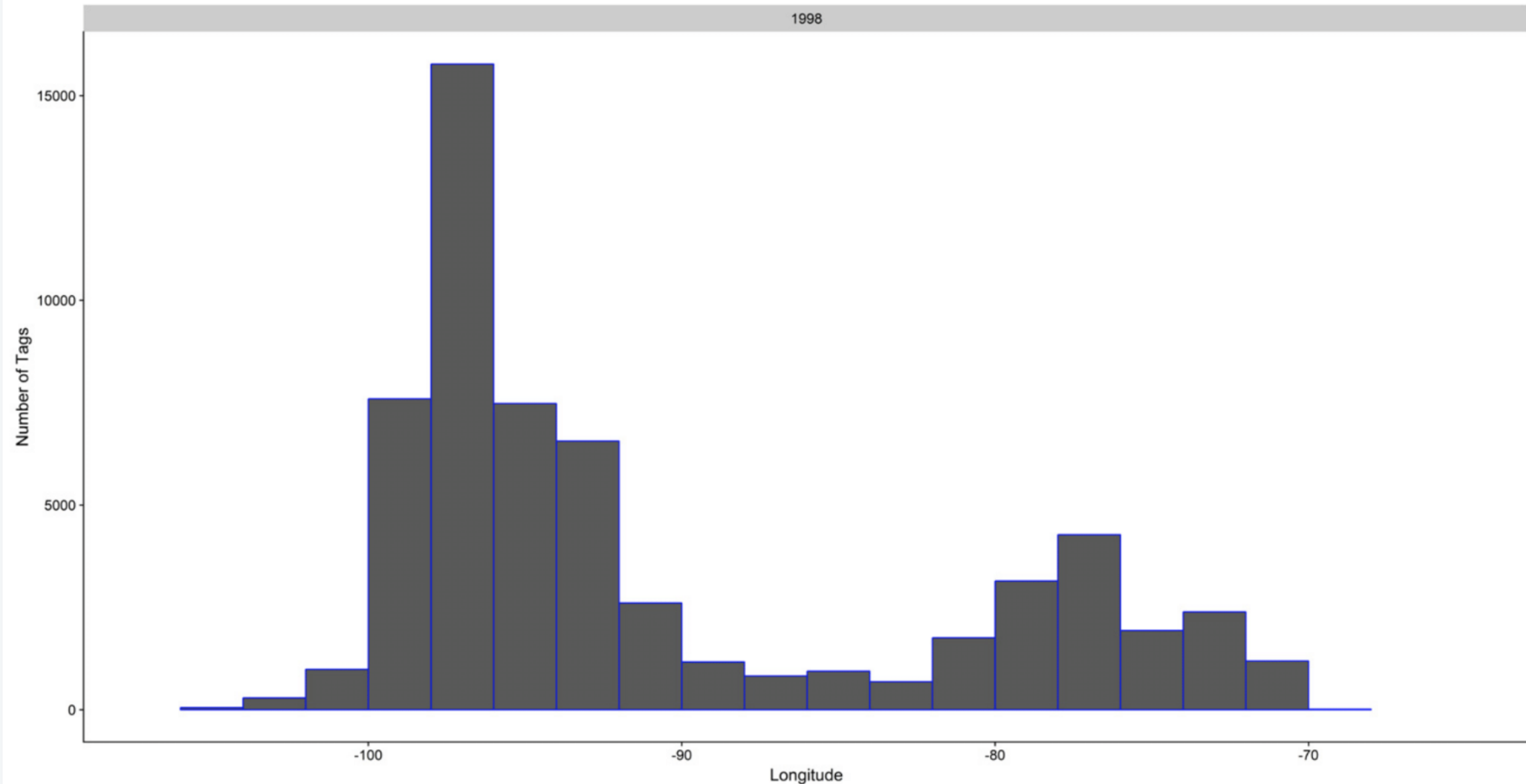


Is the loss of habitat in the corn belt  
reflected in the tagging results?

Number of Tagged vs. Longitude by Year

Page 1 of 18

1998



Recovered

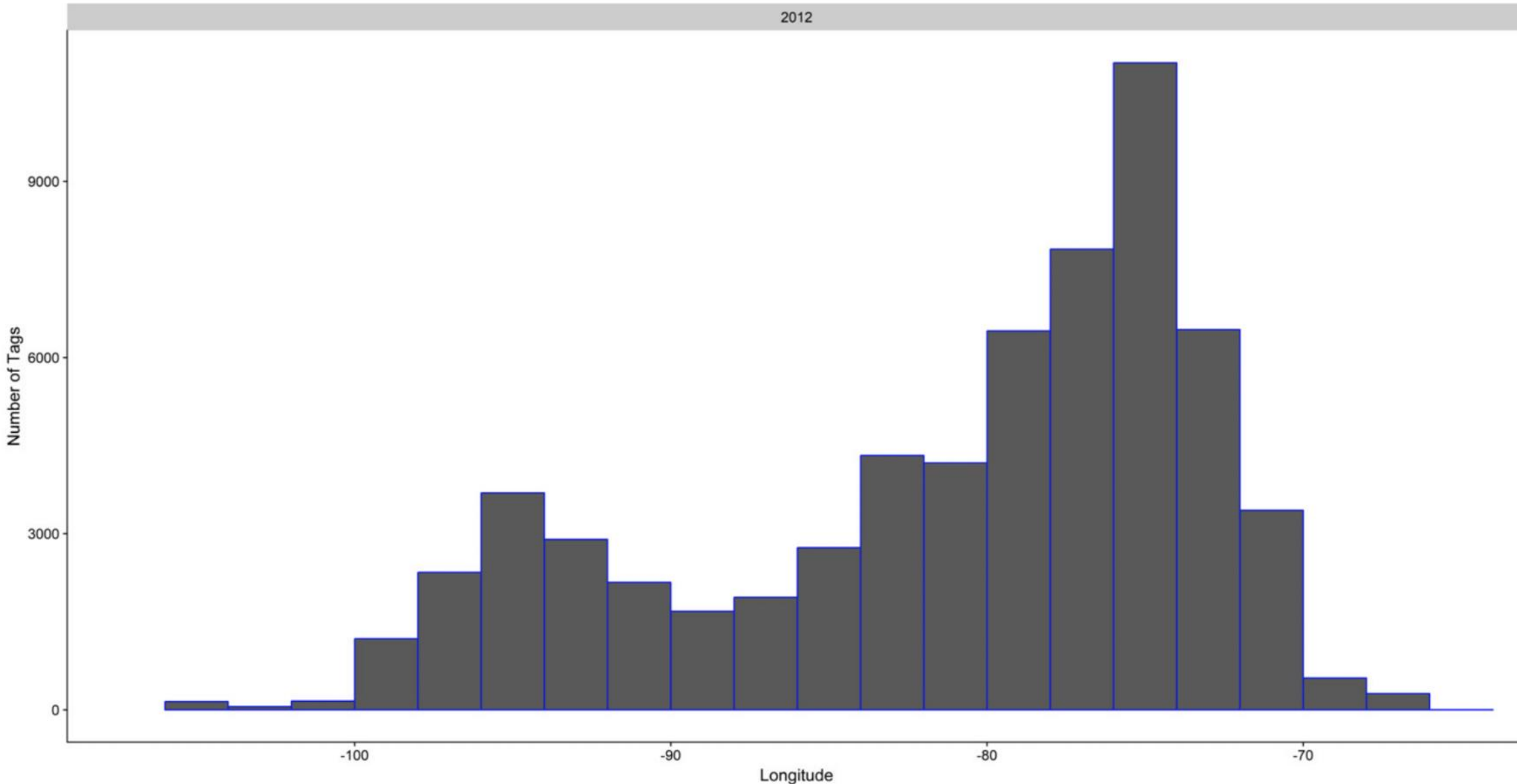
% west of 80W = 0.71

% east of 80W = .011 (21.7% total) 4%

Number of Tagged vs. Longitude by Year

Page 15 of 18

2012



Recovered

% west of 80W = 0.64

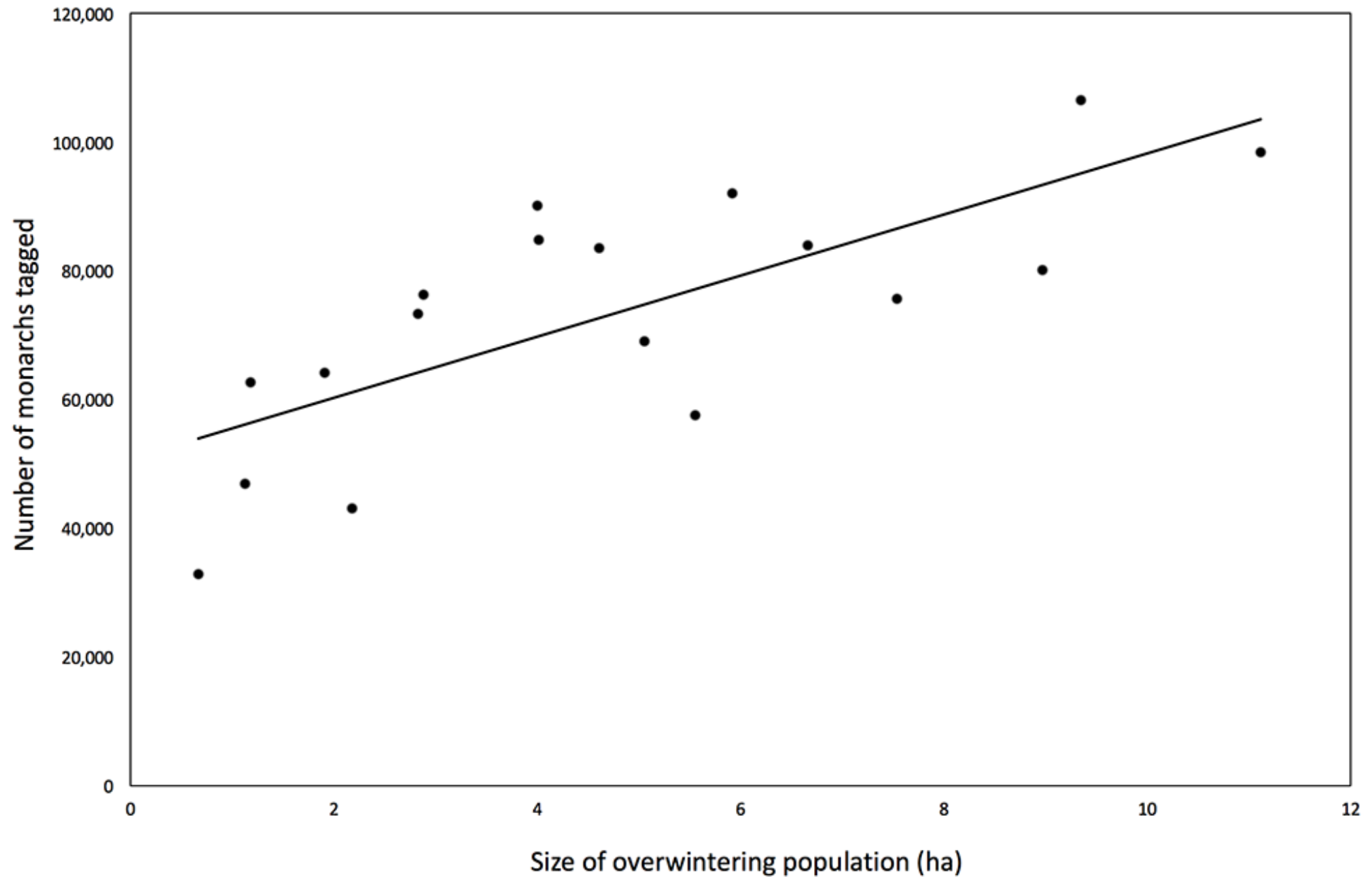
% east of 80W = 0.16 (56.6% total) 25%

# Percentages tagged and recovered +/- 2006

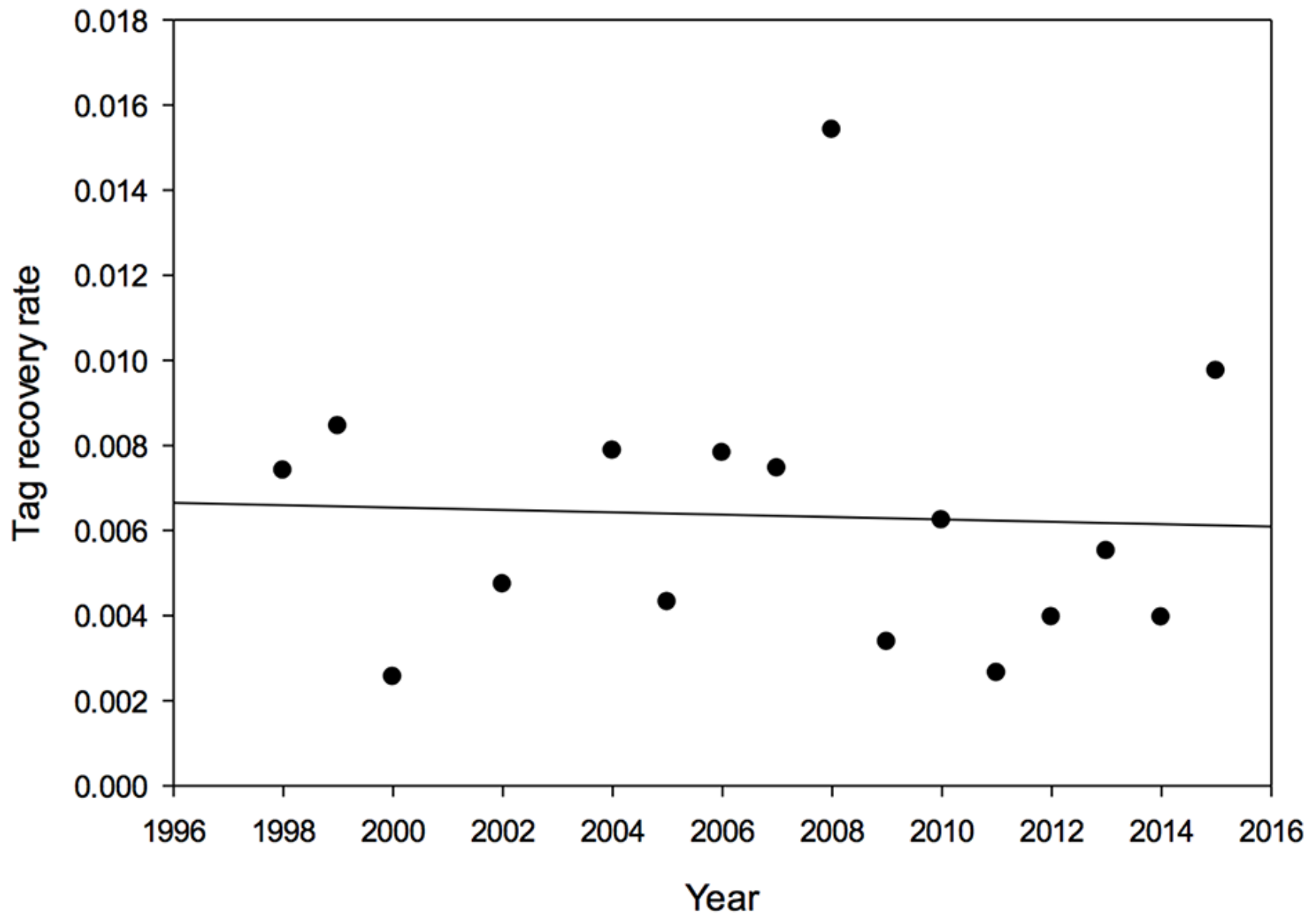
	110W - 80W		80W - 65W	
	Tagged	Recovered	Tagged	Recovered
98-05	74.4	1.01	25.6	0.29
06-15	61.7	0.91	39.3	0.24

Mean # tagged	Years	110W-80W	80W-65W
98-05	78,053	57,428	20,500
06-15	76,109	46,955	29,154

Is the monarch decline due to an increase in mortality during the migration?



Monarchs tagged vs. overwintering population 1998-2015.  $R^2 = 0.5476$ ,  $p = 0.0004$



Proportion of tags recovered by year, 1998-2015.  $R^2 = 0.002$ ,  $p = 0.87$  (NS)

# Acknowledgements

The 1.6 million monarchs that unwillingly allowed themselves to be tagged

The tens of thousands of taggers who tagged monarchs from 1992 to 2018

Jim Lovett, Ann Ryan and numerous other Monarch Watch staff and students

Ralph Grundel, Sam Pecoraro, David Gibo, John Pleasants



