

Roadside Enhancements for Pollinator Habitat

There is a global decline in the health of pollinators that threatens natural ecosystem integrity and agricultural productivity. With over 16,000 km of roads in Ontario, roadsides are a significant resource for pollinator conservation. Here are the key actions that roadside managers can take to maintain, restore, and enhance pollinator habitat:

-  Increase flower diversity
-  Provide nest sites
-  Reduce impact of mowing
-  Avoid herbicides and insecticides

Use an Integrated Vegetation Management (IVM) approach to treat landscapes. Consider incorporating strategies that are most appropriate and beneficial to pollinators based on opportunities and risks associated with each operation or context.

TERTIARY / LOCAL

Roads which primarily provide access to properties

Plant wildflowers or gardens along boulevards or medians

PRIMARY / EXPRESSWAYS

Large expressways

SECONDARY / RURAL

Arterial roads that connect regions together

Retain trees that provide pollen, nectar, and shelter for pollinators

Retain woody shrubs with pithy stems for nesting

Retain some branches or logs for nesting resources

Provide access to soil surface for nesting

Add nesting sites like nesting blocks or bee hotels

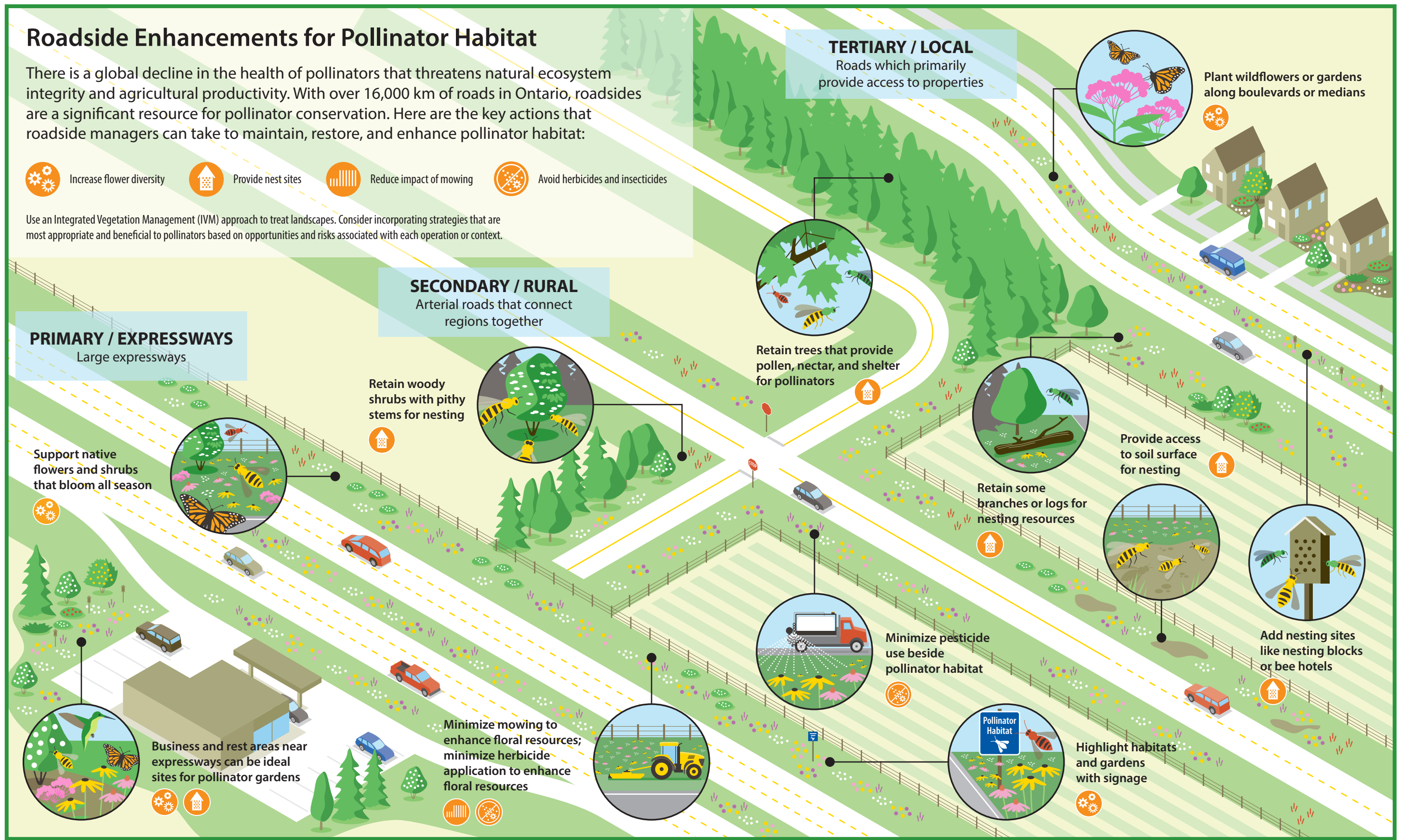
Support native flowers and shrubs that bloom all season

Minimize pesticide use beside pollinator habitat

Minimize mowing to enhance floral resources; minimize herbicide application to enhance floral resources

Highlight habitats and gardens with signage

Business and rest areas near expressways can be ideal sites for pollinator gardens



Visit www.pollinatorpartnership.ca to learn more.

