

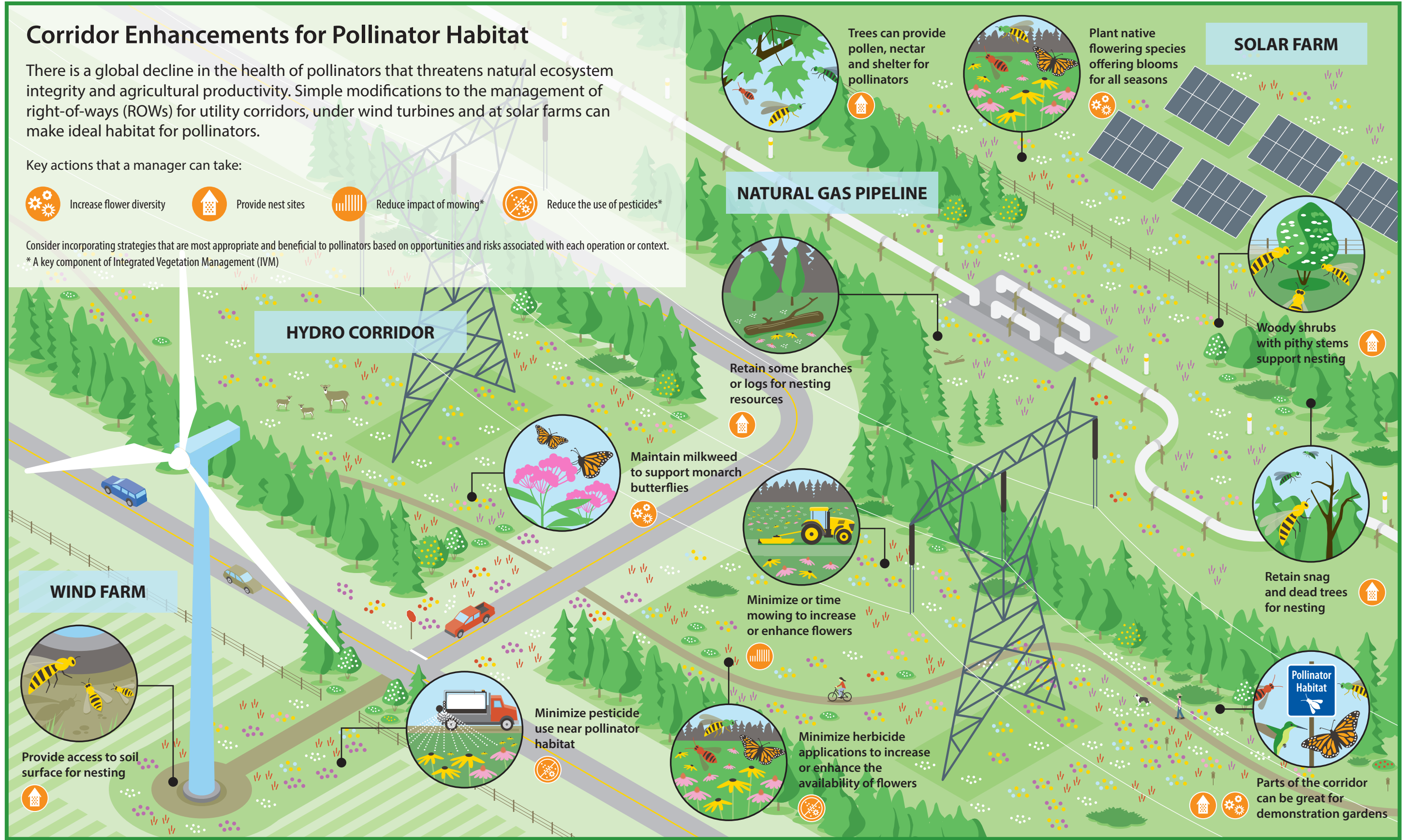
# Corridor Enhancements for Pollinator Habitat

There is a global decline in the health of pollinators that threatens natural ecosystem integrity and agricultural productivity. Simple modifications to the management of right-of-ways (ROWs) for utility corridors, under wind turbines and at solar farms can make ideal habitat for pollinators.

Key actions that a manager can take:

-  Increase flower diversity
-  Provide nest sites
-  Reduce impact of mowing\*
-  Reduce the use of pesticides\*

Consider incorporating strategies that are most appropriate and beneficial to pollinators based on opportunities and risks associated with each operation or context.  
 \* A key component of Integrated Vegetation Management (IVM)



Trees can provide pollen, nectar and shelter for pollinators



Plant native flowering species offering blooms for all seasons

## SOLAR FARM

## HYDRO CORRIDOR

## NATURAL GAS PIPELINE

## WIND FARM



Provide access to soil surface for nesting



Maintain milkweed to support monarch butterflies



Retain some branches or logs for nesting resources



Minimize or time mowing to increase or enhance flowers



Minimize pesticide use near pollinator habitat



Minimize herbicide applications to increase or enhance the availability of flowers



Woody shrubs with pithy stems support nesting



Retain snag and dead trees for nesting



Parts of the corridor can be great for demonstration gardens

Visit [www.pollinatorpartnership.ca](http://www.pollinatorpartnership.ca) to learn more.

