






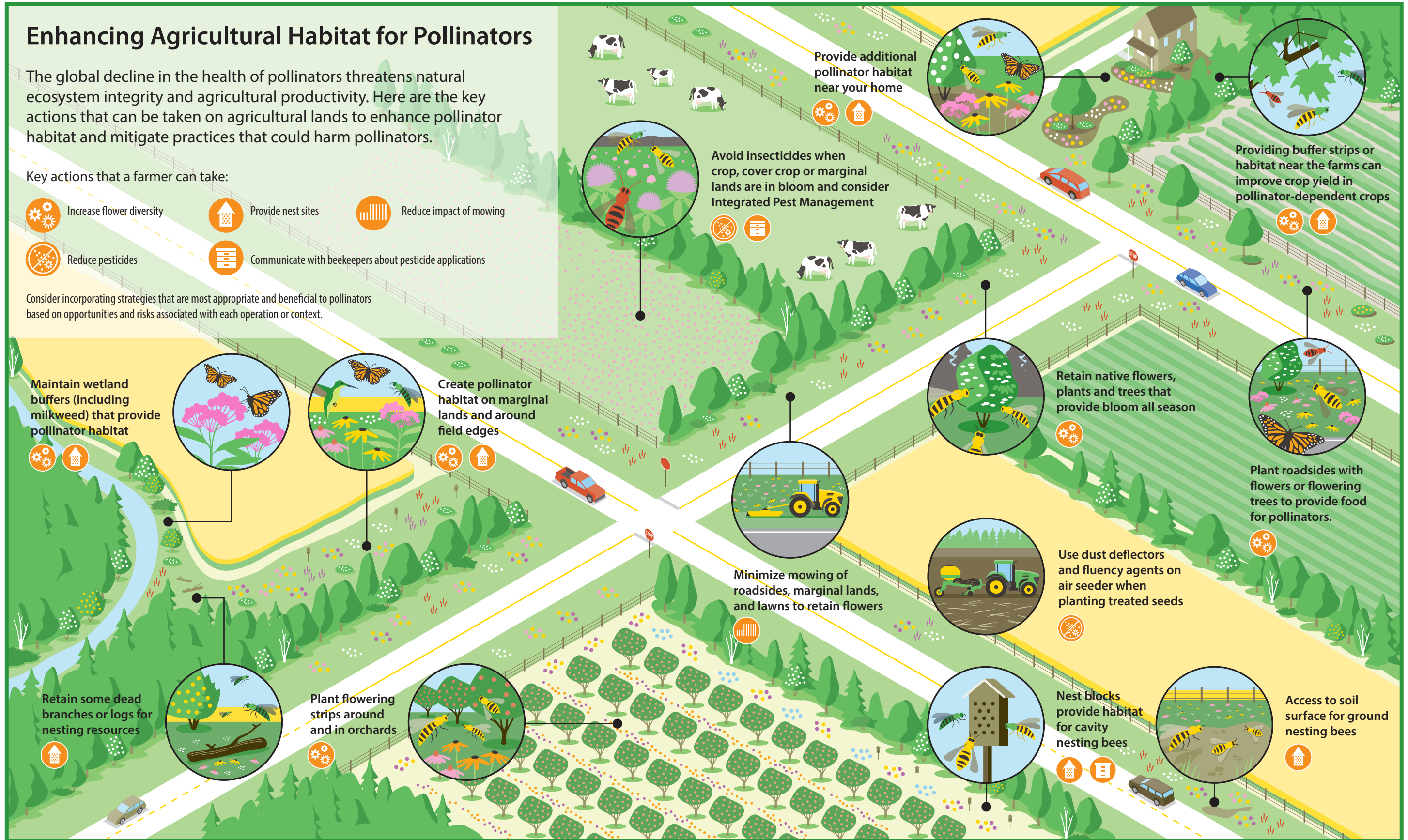
Enhancing Agricultural Habitat for Pollinators

The global decline in the health of pollinators threatens natural ecosystem integrity and agricultural productivity. Here are the key actions that can be taken on agricultural lands to enhance pollinator habitat and mitigate practices that could harm pollinators.

Key actions that a farmer can take:

-  Increase flower diversity
-  Provide nest sites
-  Reduce impact of mowing
-  Reduce pesticides
-  Communicate with beekeepers about pesticide applications

Consider incorporating strategies that are most appropriate and beneficial to pollinators based on opportunities and risks associated with each operation or context.



Provide additional pollinator habitat near your home

Avoid insecticides when crop, cover crop or marginal lands are in bloom and consider Integrated Pest Management

Providing buffer strips or habitat near the farms can improve crop yield in pollinator-dependent crops

Maintain wetland buffers (including milkweed) that provide pollinator habitat

Create pollinator habitat on marginal lands and around field edges

Retain native flowers, plants and trees that provide bloom all season

Plant roadsides with flowers or flowering trees to provide food for pollinators.

Minimize mowing of roadsides, marginal lands, and lawns to retain flowers

Use dust deflectors and fluency agents on air seeder when planting treated seeds

Retain some dead branches or logs for nesting resources

Plant flowering strips around and in orchards

Nest blocks provide habitat for cavity nesting bees

Access to soil surface for ground nesting bees

Visit www.pollinatorpartnership.ca to learn more.

