

# Partnering with Pollinators: Opportunities for Dairy Farms

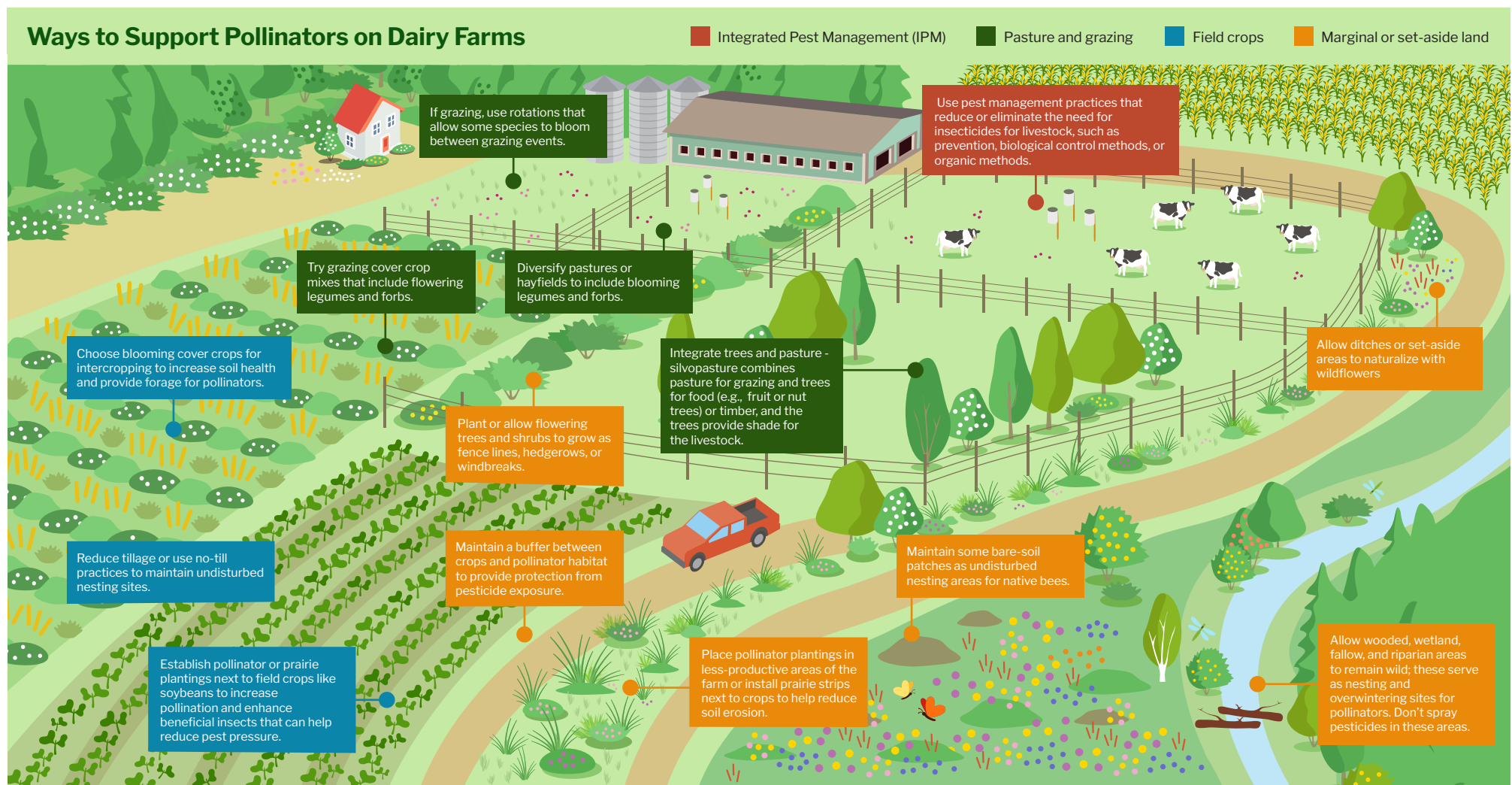
**POLLINATOR  
PARTNERSHIP**

Dairy producers are uniquely positioned to support pollinators. The same land used for growing forage crops and grazing can also provide vital habitat for pollinators. By adopting pollinator-friendly management practices, dairy producers can provide food sources, nesting, and overwinter sites, and protection for pollinators— all while maintaining productive operations.

## Why pollinators?

Pollinators, including native bees, honey bees, butterflies, moths, and some beetles, are essential to healthy ecosystems and our food supply. Nearly 90% of the world's flowering plants, including

most food crops, need pollination. Practices such as creating nesting habitat, ensuring a continuous supply of nectar and pollen throughout the growing season, and implementing integrated pest management (IPM) help support thriving pollinator communities. Pollinator-friendly management not only benefits pollinators, but also provides numerous advantages for farm productivity and ecosystem health. Healthier pollinator populations can boost forage and crop yields, while also supporting diverse communities of beneficial insects that help control crop and livestock pests. Additionally, land management practices that benefit pollinators enhance soil health by improving biological activity, water retention, erosion control, and carbon sequestration.



# Resources for pollinator-friendly management practices

## General resources on pollinators and habitat guides:

**Pollinator Partnership's Region Specific Pollinator-friendly Planting Guides**  
Build pollinator habitat and select plant species:  
[pollinator.org/guides](http://pollinator.org/guides)

**Bee Friendly Farming resources**  
Guides for supporting pollinators in agricultural landscapes:  
[pollinator.org/bff/farming-resources](http://pollinator.org/bff/farming-resources)

**Pollinator Habitat Installation Guide to Guides:**  
[pollinator.org/pollinator-habitat-guides](http://pollinator.org/pollinator-habitat-guides)

**Habitat guides with native plants to increase biodiversity on farms with Wild Farm Alliance;**  
including some excellent resources on installing hedgerows  
[wildfarmalliance.org/farmland\\_wildways](http://wildfarmalliance.org/farmland_wildways)

**Missourians for Monarchs:**  
Best Management Practices - Monarch and Pollinator Habitat in Row Crop Production  
[moformonarchs.org/wp-content/uploads/2020/10/Monarch-Booklet\\_-\\_Row-Crop-Production\\_v2.pdf](http://moformonarchs.org/wp-content/uploads/2020/10/Monarch-Booklet_-_Row-Crop-Production_v2.pdf)

## Cover crops and inter-seeding:

**Cover Cropping for Pollinators and Beneficial Insects**  
Informational handout from Sustainable Agriculture Research and Education (SARE):  
[sare.org/resources/cover-cropping-for-pollinators-and-beneficial-insects/](http://sare.org/resources/cover-cropping-for-pollinators-and-beneficial-insects/)

**Iowa Learning Farms**  
Webinars and resources on cover cropping, edge of field, intercropping and conservation:  
[iowalearningfarms.org/](http://iowalearningfarms.org/)

**Farmer showcase of interseeding cover crops - Sand County Foundation case studies:**  
[sandcountyfoundation.org/uploads/Healthy-Soils-Happy-Cows-Grower-Showcase\\_final\\_web\\_3\\_25.pdf](http://sandcountyfoundation.org/uploads/Healthy-Soils-Happy-Cows-Grower-Showcase_final_web_3_25.pdf)

**Continuous Living Cover**  
[greenlandsbluewaters.org/continuous-living-cover/#perennial-forage-grazing](http://greenlandsbluewaters.org/continuous-living-cover/#perennial-forage-grazing)

**Livestock and Crop Integration**  
[greenlandsbluewaters.org/match-made-in-heaven-livestock-crops/](http://greenlandsbluewaters.org/match-made-in-heaven-livestock-crops/)

## Grazing:

**Grassland 2.0 - Getting started with Grazing:**  
[grasslandag.org/learn/getting-started-in-grazing](http://grasslandag.org/learn/getting-started-in-grazing)

**GrassWorks**  
Resources, guides, community networks, specialists, funding sources, and programs for graziers:  
[grassworks.org](http://grassworks.org)

**Grazing Cover Crops: A How-To Guide from the Pasture Project:**  
[live-the-pasture-project.pantheonsite.io/wp-content/uploads/2020/02/Grazing-Cover-Crops-How-To-Guide.pdf](http://live-the-pasture-project.pantheonsite.io/wp-content/uploads/2020/02/Grazing-Cover-Crops-How-To-Guide.pdf)

**Rotational grazing of cover crops**  
a guide from Sand County Foundation:  
[sandcountyfoundation.org/our-work/conservation/grazing/rotational-grazing-on-cover-crops](http://sandcountyfoundation.org/our-work/conservation/grazing/rotational-grazing-on-cover-crops)

**Best Management Practices for Monarch and Pollinator Habitat in Grazing Operations:**  
[moformonarchs.org/wp-content/uploads/2020/10/Monarch-Booklet\\_-\\_Grazing\\_v2.pdf](http://moformonarchs.org/wp-content/uploads/2020/10/Monarch-Booklet_-_Grazing_v2.pdf)

**Grazing Native Plants**  
Processes and Experiences:  
[leopold.iastate.edu/files/pubs-and-papers/2014-08-grazing-native-plants-iowa-processes-and-experiences.pdf](http://leopold.iastate.edu/files/pubs-and-papers/2014-08-grazing-native-plants-iowa-processes-and-experiences.pdf)

**Green Lands Blue Waters Perennial Forage Working Group**  
[greenlandsbluewaters.org/midwest-perennial-forage-working-group](http://greenlandsbluewaters.org/midwest-perennial-forage-working-group)

**Establishing And Managing Warm Season Pasture**  
[greenlandsbluewaters.org/wp-content/uploads/2020/10/GLBW-Warmseason-fact-sheet-LPaine-Sep2020-FINAL-1.pdf](http://greenlandsbluewaters.org/wp-content/uploads/2020/10/GLBW-Warmseason-fact-sheet-LPaine-Sep2020-FINAL-1.pdf)

## Technical assistance

**Pollinator Partnership**  
Partner biologists or consultants:  
[pollinator.org/consulting/restoration-seed-mixes-design](http://pollinator.org/consulting/restoration-seed-mixes-design)

**Pheasants Forever**  
Specialized consultants in conservation programs and habitat planning  
[pheasantsforever.org/Habitat/findBiologist.aspx](http://pheasantsforever.org/Habitat/findBiologist.aspx)

## IPM for Dairy Farms:

**Pest Management in Wisconsin Field Crops: A guide to managing weeds, insects, and diseases in corn, soybean, forages, and small grains**  
UW-Extension publication A3646:  
[cropsandsoils.extension.wisc.edu/files/2022/12/A3646\\_Book\\_web.pdf](http://cropsandsoils.extension.wisc.edu/files/2022/12/A3646_Book_web.pdf)

**Best Management Practices (BMPs) for Pollinator Protection in Field Corn**  
Resources and guide developed by the National Corn Growers Association and the Honey Bee Health Coalition:  
[honeybeehealthcoalition.org/resources/corn-best-management-practices](http://honeybeehealthcoalition.org/resources/corn-best-management-practices)

**The Wisconsin Pollinator Protection Plan: Best Management Practices for Maximizing Pollinator Health and Pollination Services on Farms**  
[datcp.wi.gov/Documents/PPPFarms.pdf](http://datcp.wi.gov/Documents/PPPFarms.pdf)

**Integrated Pest Management (IPM) Guide for Organic Dairies**  
A great guide for pest monitoring methods and alternative control methods  
[maine.gov/dacf/php/integrated\\_pest\\_management/documents/2016-org-dairy-NYSIPM.pdf](http://maine.gov/dacf/php/integrated_pest_management/documents/2016-org-dairy-NYSIPM.pdf)

**Integrated Fly Management for Pastured Cattle. SARE Fact Sheet**  
Matt Steiman, Jason Smith  
[projects.sare.org/media/pdf/F/I/y/Fly-IPM-Fact-Sheet-PA.pdf](http://projects.sare.org/media/pdf/F/I/y/Fly-IPM-Fact-Sheet-PA.pdf)

**IPM Institute of North America**  
Integrated Pest Management support for agriculture and communities  
[ipminstitute.org](http://ipminstitute.org)

**UW Extension Grazing Program**  
[cropsandsoils.extension.wisc.edu/grazing](http://cropsandsoils.extension.wisc.edu/grazing)

## Cost-share programs

**Farm Service Agency - Conservation Reserve Program (CRP)**  
[fsa.usda.gov/resources/programs/conservation-reserve-program](http://fsa.usda.gov/resources/programs/conservation-reserve-program)

**CP42 Pollinator Habitat**  
Establishing and Supporting Diverse Pollinator-Friendly Habitat with the Farm Service Agency  
[fsa.usda.gov/Internet/FSA\\_File/pollinator\\_fact\\_sht.pdf](http://fsa.usda.gov/Internet/FSA_File/pollinator_fact_sht.pdf)

**Natural Resources Conservation Service (NRCS)**  
has multiple cost-share programs such as EQIP, CSP, WHIP to assist with pollinator plantings, rotational grazing fencing, cover cropping, silvopasture, interseeding, and so much more. Find your local service center for more information:  
[nrcs.usda.gov/contact/find-a-service-center](http://nrcs.usda.gov/contact/find-a-service-center)

**Landowner Incentive habitat programs**  
through a state Department of Natural Resources or similar state agency - check your state's Department of Natural Resources website

**Landowner Incentive programs**  
through your county Land and Water Resources Department or Water Conservation District

**U.S. Fish and Wildlife Service - Partners for Fish and Wildlife Program**  
Provides free technical and financial assistance for improving wildlife habitat on their land  
[fws.gov/program/partners-fish-and-wildlife](http://fws.gov/program/partners-fish-and-wildlife)

**Producer-led watershed programs**  
grants, community, and support for working towards conservation goals: (this one is for WI only but check your state's DATCP)  
[datcp.wi.gov/pages/programs\\_services/producerled\\_projects.aspx](http://datcp.wi.gov/pages/programs_services/producerled_projects.aspx)

## Certification programs

**Pollinator Partnership - Bee Friendly Farming Certification**  
[pollinator.org/bff](http://pollinator.org/bff)

**Audubon Bird-Friendly Habitat Management certification**  
A system of protocols keeps grazing habitat beneficial to birds and animals:  
[audubon.org/news/protocols-bird-friendly-habitat-management-certification](http://audubon.org/news/protocols-bird-friendly-habitat-management-certification)