

Cucumber



353

Indiana Farms



2,470

Acres Harvested



Common Pests:

Cucumber Beetle

Aphids

Thrips

Squash Bug

White Flies

Natural Enemies of Pests:

Damsel Bug

Parasitic Wasps & Flies

Green Lacewing

Minute Pirate Bug

Hover Flies

Spiders

Lady Beetles

Essential Pollinators:

Sweat Bees

Ceratina Bees

Bumblebees

Honey Bees

Indiana Native Pollen/Nectar Plants that Help Support Pollinators and other Beneficials:

SPRING-SUMMER

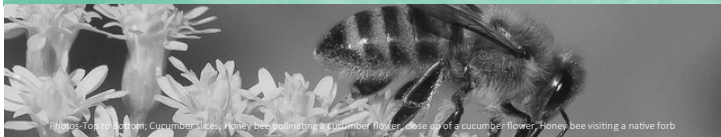
- 1 Milkweeds
(*Asclepias* spp.)
- 2 New Jersey Tea
(*Ceanothus americanus*)
- 3 Black-eyed Susan
(*Rudbeckia hirta*)

SUMMER

- 4 Blue Vervain
(*Verbena hastata*)
- 5 Mountain Mint
(*Pycnanthemum* spp.)
- 6 Coneflowers
(*Echinacea* spp.)

SUMMER-FALL

- 7 Rattlesnake Master
(*Eryngium yuccifolium*)
- 8 Boneset
(*Eupatorium* spp.)
- 9 Goldenrods
(*Solidago* spp.)



Photos: Top to bottom, Cucumber slices, Honey bee pollinating a cucumber flower, close up of a cucumber flower, Honey bee visiting a native forb

POLLINATOR PARTNERSHIP



USDA and its partners are equal opportunity providers, employers and lenders.

The Pollinator Connection Indiana Specialty Crops Infographic Series - Cucumber Edition



Indiana Farms & Harvested Acres according to the 2017 Census of Agriculture, National Agriculture Statistics Service. Pest, Beneficial, and Pollinator associations sourced from Marion County SWCD, Beneficial Insects for Fruit and Vegetable Growers & Wildflowers for Beneficial Insects. Published by the USDA-NRCS in collaboration with Pollinator Partnership, 2021. Designed and produced by Jared O'Brien, Amber Barnes, and Joanna Scott. Background photo: cucumber vine beginning to flower. Native plant photos: USDA, NRCS, 2021. PLANTS Database (<https://plants.sc.egov.usda.gov/>, 06/29/2021). National Plant Data Team, Greensboro, NC 27401-4901 USA