

Pollinator Steward Certification



A PROGRAM OF
POLLINATOR PARTNERSHIP

Module 7: Expand Your Impact!

Tuesday, April 8th, 2025

Anthony Colangelo
Pollinator Partnership

Maddie Dong
Pollinator Partnership

Anya Peters
PSC Star Steward

www.pollinator.org
stewards@pollinator.org

**POLLINATOR
PARTNERSHIP**

Protect their lives. Preserve ours.

Housekeeping:

- Recordings will be shared on the Course Information page and be available until December 31st, 2025
- Closed captioning is available – enable in your controls.
- Please put questions in the Q&A box; UPVOTE questions you like!
- Questions for panelists will be answered at the end of the session.
- Contact stewards@pollinator.org for registration issues, questions, etc.
- Engage in respect and kindness with each other in the chat.
- We suggest that you write down in point form or 1-2 sentences the key takeaways from each training while you are attending live.



Course Information Page:

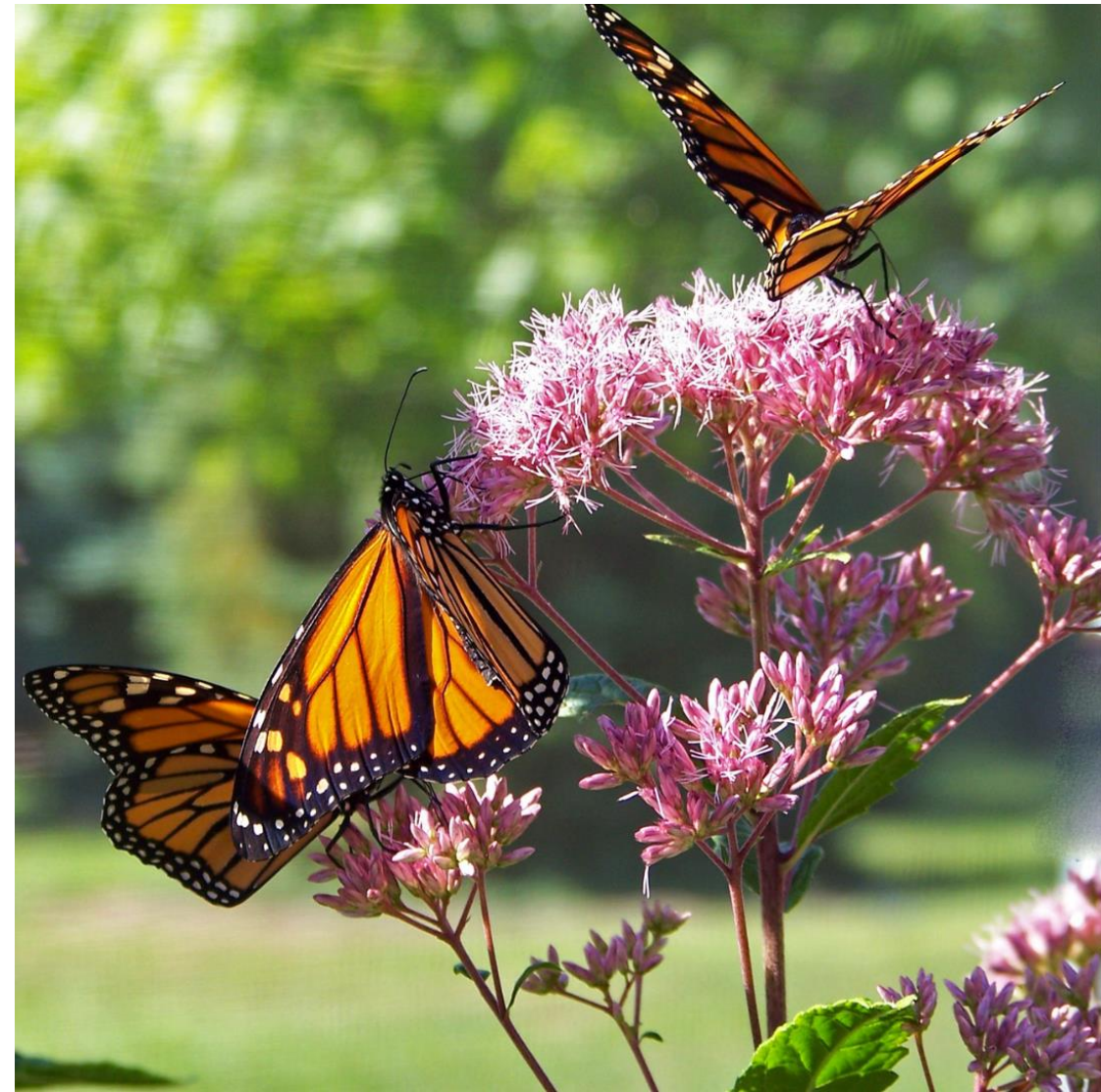
The Course Information page will be your homebase for module recordings, updates, and program resources. Login to the Course Information page using the following username and password:

website: <https://www.pollinator.org/psc/course-info>

username: PollinatorSteward

password: psc2025

Please do not share the username and password as this page is only for registered participants of the 2025 Pollinator Steward Certification program.



**POLLINATOR
PARTNERSHIP**

Tonight's Speakers!



Anthony Colangelo
Outreach and Education Specialist
Pollinator Partnership



Maddie Dong
Program and Communications Coordinator
Pollinator Partnership



Anya Peters
PSC Star Steward

Three Tips to Educate and Engage

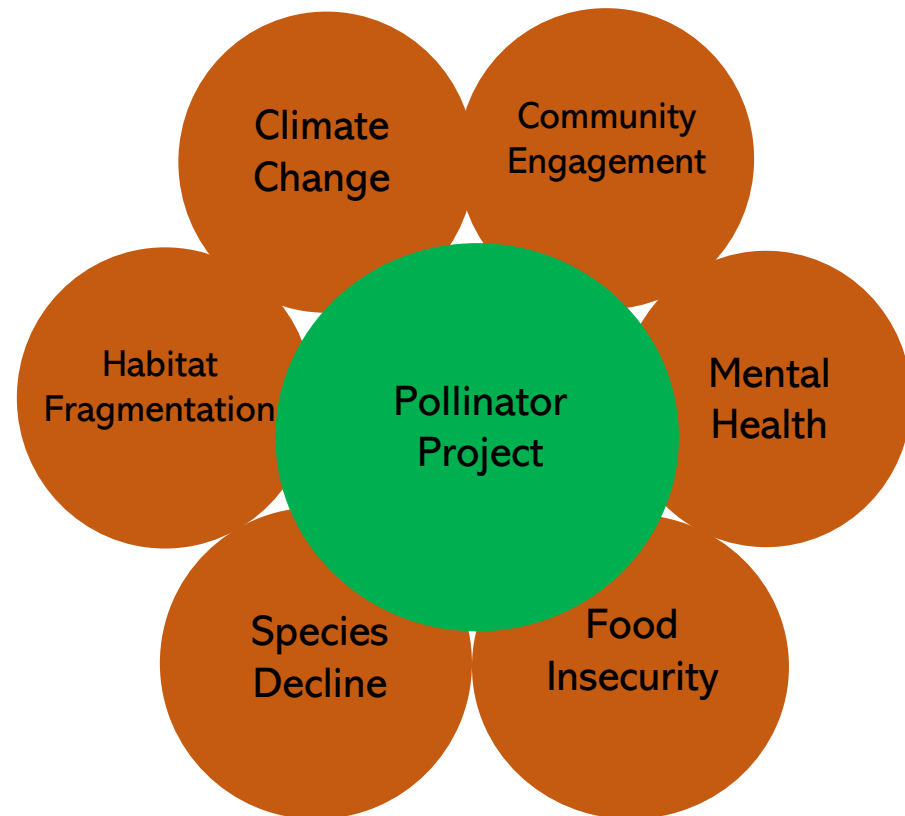
1. What's Your Hook?
2. Signs, Signs, Signs!
3. Patience and Persistence



**POLLINATOR
PARTNERSHIP**

What's Your Hook?

- What made you interested in helping pollinators?
- What is the shortest way to communicate your idea effectively?
- Share your goals with your community!



Take time to discover the bees, hummingbirds, bats, butterflies, moths, and others on this poster at www.pollinator.org. BeeSmart™ tools are available to help you S.H.A.R.E.* your own pollinator discoveries.

¡Tome tiempo para descubrir a las abejas, colibríes, murciélagos, mariposas, polillas, y otros en este póster en nuestra página www.pollinator.org. Las herramientas de BeeSmart™ disponibles para ayudarlo a compartir sus propios descubrimientos de los polinizadores con el programa S.H.A.R.E.*

Prenez le temps de découvrir les abeilles, colibris, chauves-souris, papillons, papillons de nuit, et d'autres sur cette affiche sur ce site www.pollinator.org. Les outils BeeSmart™ sont disponibles pour vous aider à partager vos découvertes de pollinisateurs avec le programme S.H.A.R.E.*

Tome su tiempo para descubrir las abejas, colibríes, murciélagos, mariposas, polillas, y otros en este póster en nuestra página www.pollinator.org. Las herramientas de BeeSmart™ disponibles para ayudarlo a compartir sus propios descubrimientos de los polinizadores con el programa S.H.A.R.E.*



Signs, Signs, Signs!

- Signify intent
- Incorporate public feedback mechanism
- Think of themes to base information around – i.e, how-to, “mythbusting”, climate-smart, flood mitigation, etc.



Pollinator Habitat

This area provides
food, nesting, and
resting for pollinators

Learn how to make your
own pollinator habitat at
pollinator.org



POLLINATOR
PARTNERSHIP

Pollinator Garden

This area provides
food, nesting, and
resting for pollinators

Learn how to make your own
pollinator garden at

pollinator.org



POLLINATOR
PARTNERSHIP

Patience and Persistence



Pollinator Stewards Around the World!



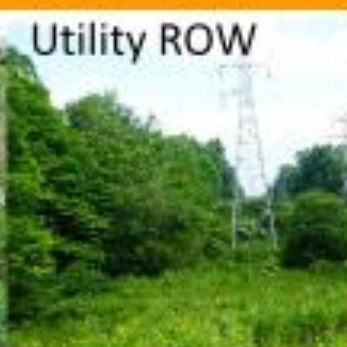
Together, we can enhance and reconnect the landscape



Farms



Local Parks



Utility ROW



Ranches



Transportation districts



Industry



Hedgerows



Public Gardens



City Beautification



Home Gardens



Conservancies



Cover crops



Marginal lands



Wildflower Strips



Windbreaks



Buffers

Bee Houses: Uses, Dos, and Don'ts





**POLLINATOR
PARTNERSHIP**

Bee Houses Can be Fun!

BUT know what:

1. they are for (and not for)
2. not to use
3. to look for
4. to do to maintain



**POLLINATOR
PARTNERSHIP**

Why Bee Houses?



- More nesting
- Support pollination
- Educational
- Fun!
- Conservation?

Why NOT Bee Houses?



- Harm if not properly designed
- Not maintained
- Pests
- Not enough food
- Invasive species

Solitary Bee Life Cycle

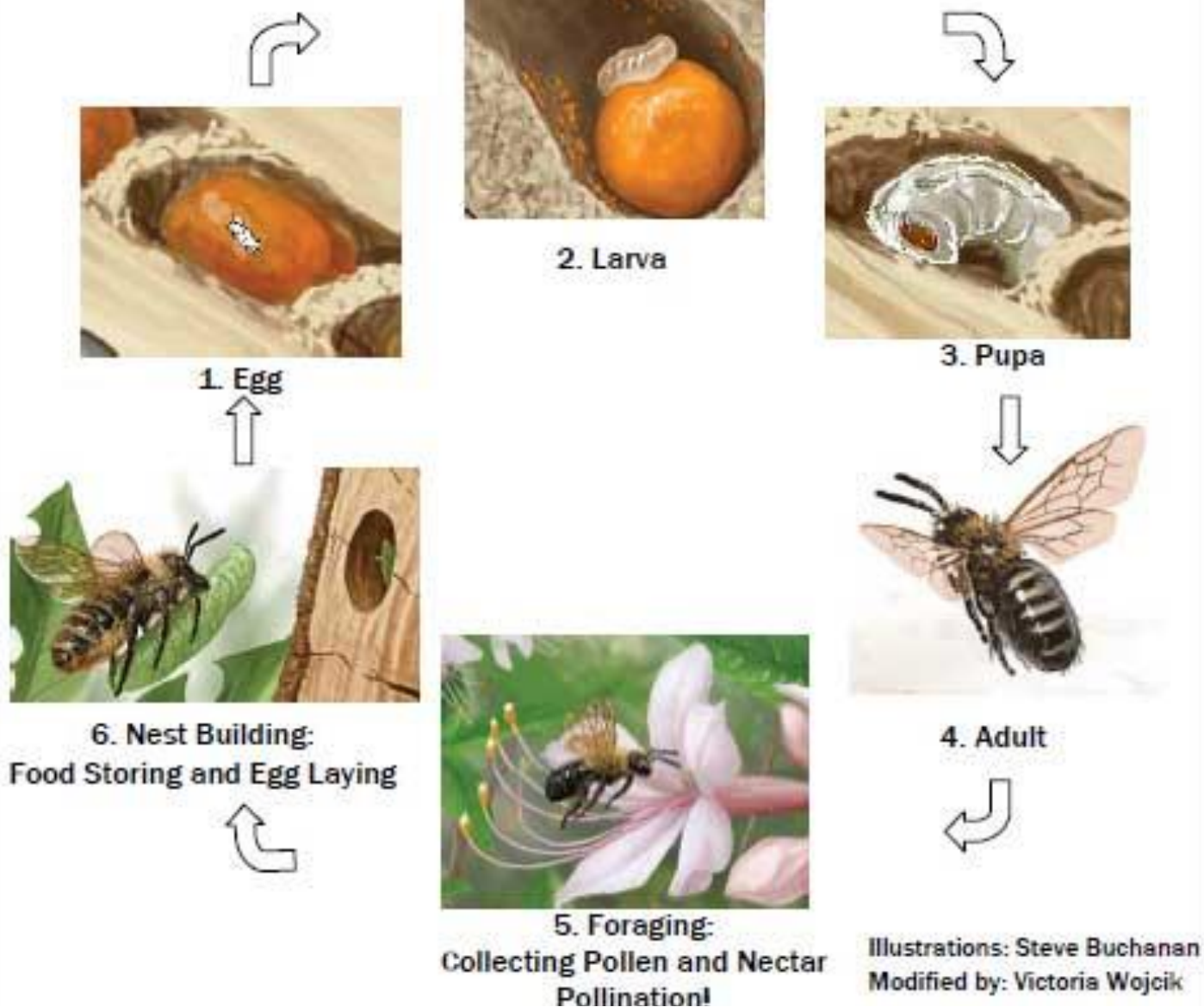


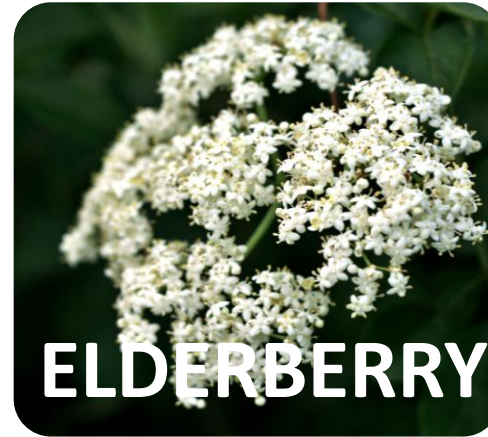


Photo: Leaf Cutter Bee by Rodger Evans, courtesy of Flickr (CC BY-ND 2.0)



**POLLINATOR
PARTNERSHIP**

Natural Bee Nests = Plants with Pithy Stems



What you don't want



- Too shallow
- Too many
- Too wide
- Not secure
- CAN'T CLEAN

3.What you do want



- Depth at least 15cm
- Width 8mm or less
- Secure
- CLEANABLE!



**POLLINATOR
PARTNERSHIP**



**POLLINATOR
PARTNERSHIP**



Garry Fletcher
<https://www.gfletcher.ca/?cat=2>



**POLLINATOR
PARTNERSHIP**



Set up



- Overhang
- South facing
- Food
- Mud
- Secured

Maintain



- Need to be able to remove/clean cocoons and house
- Many methods: dilute bleach, sand
- Find online



Hundreds of Krombein's hairy-footed pollen mites on a mason bee. Image by @GeeBee60.

Annual Schedule for Bee Houses

Early spring (Feb): Put out cleaned/empty bee house

Early spring: Put out cocoons

Spring: Observe and enjoy!

Late Spring/summer: see them hatching/eating/pupating

Summer: Nothing

Fall/Winter: Remove cocoons, clean and store

Bee House Short Checklist

- ✓Tunnels can be cleaned (paper, cardboard, reeds, modular trays)
- ✓Tunnels are long enough (at least 15cm)
- ✓Tunnels are not too wide (8mm or less)
- ✓Structure can be firmly secured (not swinging)
- ✓Structure has protection from elements (roof)
- ✓There are enough resources for the bees
- ✓You are able to take care of the house



BEE HOUSES

A male mason bee with pollen on its back



WHAT IS A BEE HOUSE?

Artificial bee houses can be made or purchased and are used by wild bees such as mason and leafcutting bees. These bees are 'solitary', meaning that they don't live in colonies. Each female makes her own nest in natural or artificial tunnels.

Natural nesting is the best way to support native bees, but if done right, artificial nesting can provide a boost to wild bees and be a fun, educational, and engaging activity.

No Fear of Stings!

Wild solitary bees are very unlikely to sting you; give them some space and they will be your pollinator powerhouses.

BUYING A BEE HOUSE

Many bee houses offered at stores are not properly designed to allow for cocoon removal and cleaning. Some houses have tunnels that are far too wide to be used by any native bees and invite pest species such as social wasps. Bee houses with too many nesting sites in one structure can provide a buffet for predators and a breeding ground for parasites and diseases.

When buying a bee house, make sure the structure has tunnels that can be cleaned!

More specifications on pg 2.



www.pollinator.org



DIY BEE HOUSES

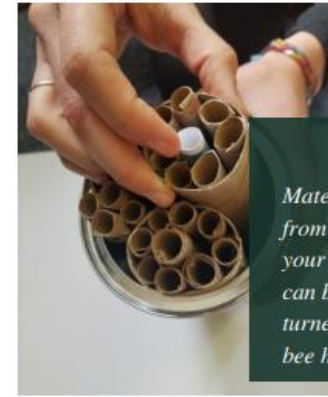
Create your own bee house from materials around your home or woodshop!

Housing: the outer housing can be made from wood, pvc piping, or recyclables like cans and milk containers.

Nesting: the nest tunnels are within the housing. They can be made by drilling holes in wood blocks, logs (no need for housing in this case), or cut lumber. If you're not into wood working, harvest plant stems such as hollow reeds, roll newspaper, or purchase cardboard straws. Make sure the back of the tunnel is sealed so light does not come in.

Making various sized tunnels, .35" and less, can attract a variety of bee types!

Modular trays or reed, paper, or cardboard straws are great options



Materials from around your house can be turned into bee houses

LOCATING AND CARING FOR YOUR BEE HOUSE

- Mount to a solid object like a post, house, or fence.
- Orient so it is facing direct sunlight in the morning.
- Make sure there are flowers near the house.
- At eye level ~3-6' (~1-2 m) above the ground.
- Can be placed on balconies, up to 10 stories.
- Area is free of pesticides that are harmful to bees.



WHETHER BUYING OR MAKING, FOLLOW THESE GUIDELINES:

- Tunnels can be opened to remove cocoons and clean (paper, cardboard, reeds, modular trays).
- Beware of bamboo; cocoons cannot be removed.
- Tunnels are at least 6" (15 cm) long.
- Tunnels are .35" (9 mm) or less in diameter.
- Structure can be firmly secured (not swinging).
- Nest tunnels have protection from elements (roof).

www.pollinator.org

Find more information on creating and caring for bee houses [link to 2-pager page], [this video](#), and at [Crown Bees](#)

Rearing Butterflies



PSC Member Benefits :

Thank you for being a part of our program!

- Access to bonus webinars
- Notified about special events happening at Pollinator Partnership
- Access to our PSC Facebook group that connects all past and current participants
- First to hear about new pollinator and planting resources



Next Steps and Certification:

- Complete the Step 1 form by **December 31st, 2025**.
- The Step 1 form will be emailed to you and posted to the Course Info page

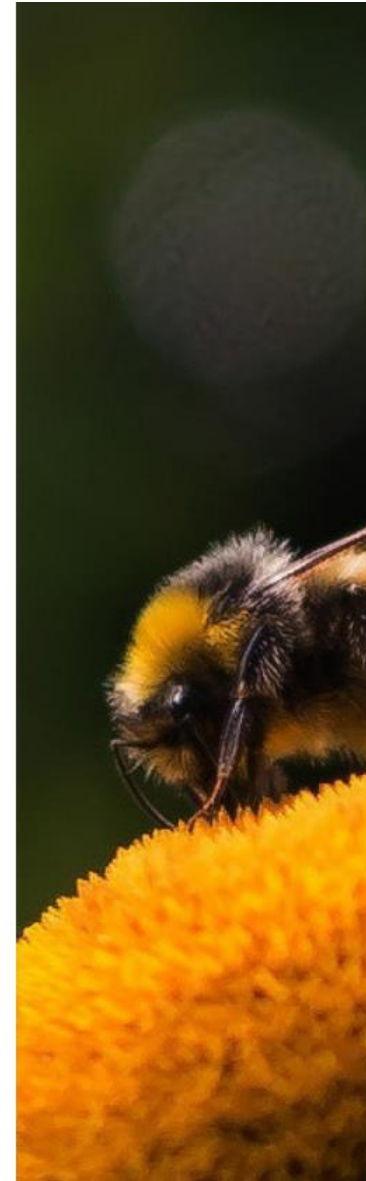


PSC Step 1: Module Summaries

a) Summarize in one or two sentences what you learned from Module 1: Introduction to Pollinators. *

b) Summarize in one or two sentences what you learned from Module 2: Indigenous Perspectives. *

c) Summarize in one or two sentences what you learned from Module 3: Butterflies and Other Pollinators. *



Next Steps and Certification:


- After submitting the Step 1 form, your responses will be reviewed, and Pollinator Partnership staff will send you the link to the Step 2 form.
- You must complete your habitat and outreach actions and submit your Step 2 form by **September 30th, 2026**.



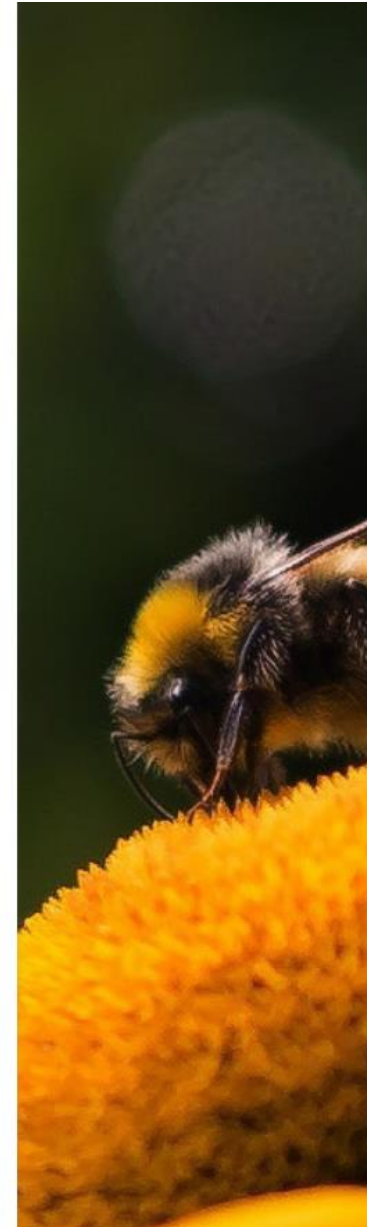
PSC Step 2: Habitat and Outreach Action Details

1. Describe in 1-2 paragraphs what HABITAT activities you have conducted within the last year for pollinators. *

2. Provide at least one picture showing your habitat work. *


Browse Files
Drag and drop files here

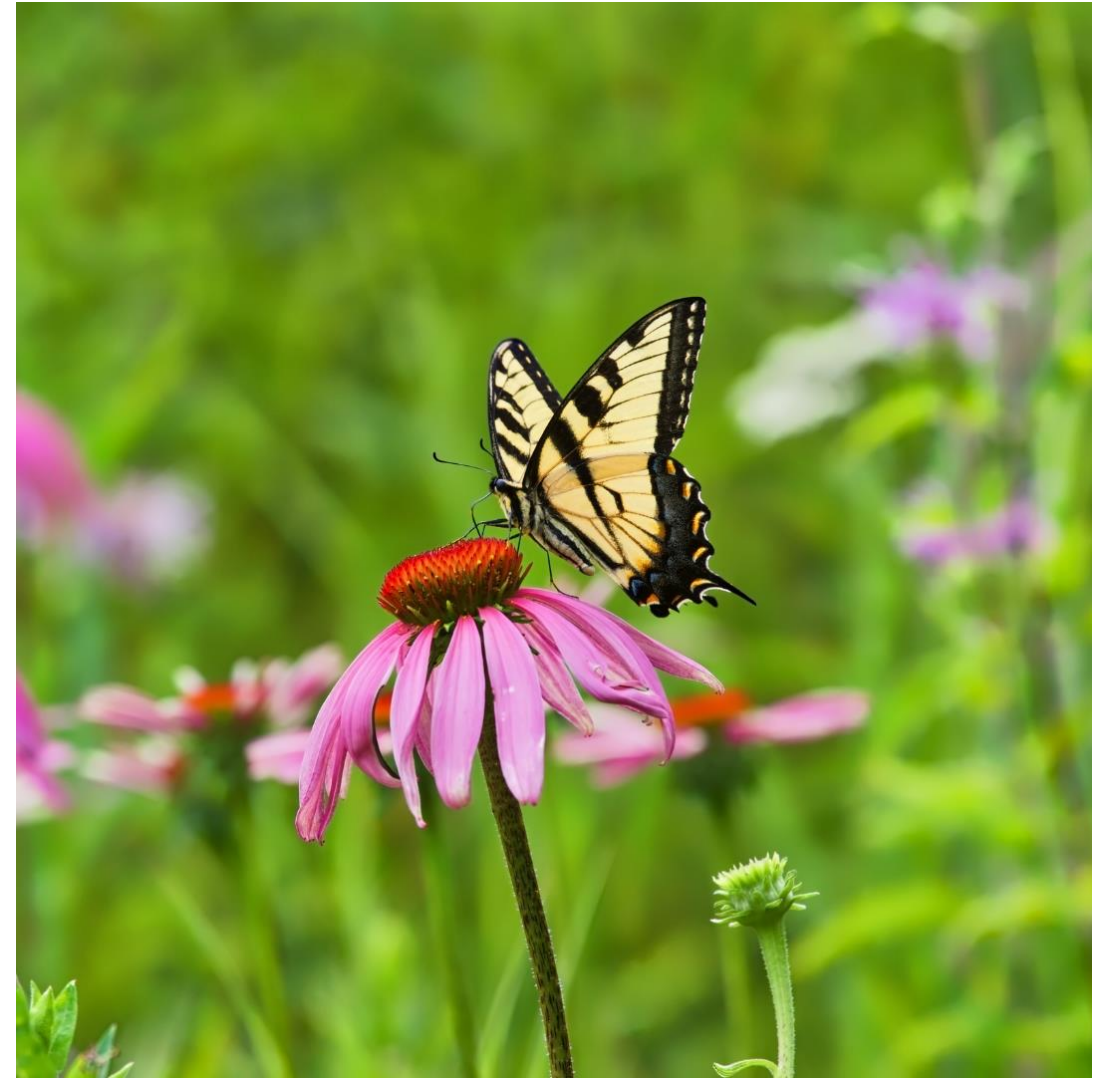
3. Describe in 1-2 paragraphs what OUTREACH activities you have conducted within the last year for pollinators. *



**POLLINATOR
PARTNERSHIP**

Step 2 Habitat Actions:

- Creation of pollinator habitat; any size, any location.
- Removal of invasive plant species.
- Alteration of management practices to promote pollinator health.
- Email stewards@pollinator.org if you have a question about your habitat action.



Step 2 Outreach Actions:

- Creating pollinator and garden signage.
- Connecting with other community members and schools to spread pollinator education.
- Art/science outreach through crafts and installations.
- Email stewards@pollinator.org if you have a question about your outreach or education action.



Next Steps and Certification:

- Once both forms have been submitted and approved, you will receive a certificate of completion, and the authority to use the Pollinator Steward stamp as part of your correspondence and pollinator-related activities.



Wrap Up :

- Recordings and resources will be shared on the Course Information page this week
- Recordings will be available on the Course Information page until December 31st, 2025
- **Step 1 Form will be sent to you in an email this week and posted to the Course Info page**
- CONGRATS! You have completed the first part of your Pollinator Steward Training!



**POLLINATOR
PARTNERSHIP**