

Dates extended due to Apimondia!

# Join The 2019 Annual North American **Mite-A-Thon** Learn More About the Mites That May be in Your Hive

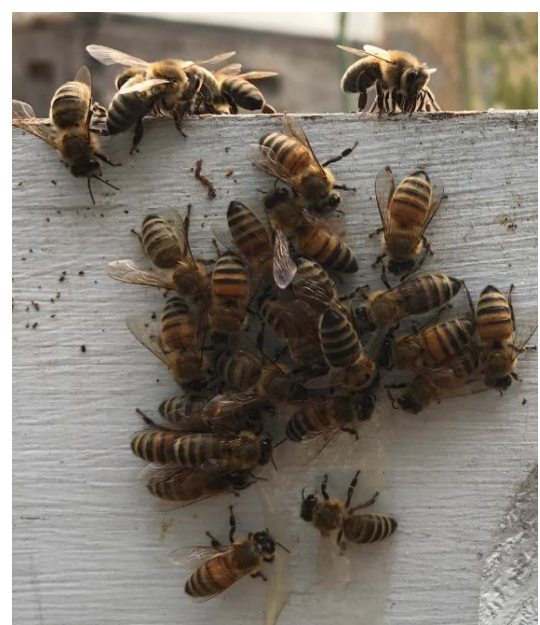
Saturday, September 7 to Saturday, ~~September 14, 2019~~  
September 21

**What is the Mite-A-Thon?** Mite-A-Thon is an international effort to help beekeepers gain knowledge of the level of mite infestation that their hives are carrying just before the overwintering season begins. The data collected by participants also helps to visualize *Varroa* infestations in honey bee colonies across North America within a one-week window. All beekeepers can participate from Canada, the United States, and Mexico. Their *Varroa* monitoring data will be uploaded to [www.mitecheck.com](http://www.mitecheck.com) and a report produced (without identifying individual participants).



**What can beekeepers gain by participating?** The parasitic mite, *Varroa destructor* (*Varroa*), and the viruses it vectors is a significant driver of this honey bee colony mortality. Yet, indicators suggest that many beekeepers are not monitoring honey bee colony *Varroa* infestations and therefore aren't able to

connect infestation to colony loss.



**What are the reasons the Mite-A-Thon is being held?** There are two objectives of the Mite-A-Thon:

- 1) To raise awareness about honey bee colony *Varroa* infestations through effective monitoring methods.
- 2) To make available management strategies for discussion within bee organizations utilizing Mite-A-Thon partner developed information and outreach materials.

**What does it cost?** There is no cost. Participants can create their own test materials or kits can be purchased online and at bee supply stores. Promotion of Mite-A-Thon will be accomplished through local bee clubs, state beekeeping organizations, and national associations.

**How will it work?** Participants will monitor the level of mites (number of mites per 100 bees) using a standardized protocol utilizing two common methods of assessment (powdered sugar roll or alcohol wash) and then enter data, including location, total number of hives, number of hives tested, local habitat, and the number of *Varroa* mites counted from each hive. The published information will not identify individual participants.

**What is the next step for a beekeeper?** Determine your preferred method of testing for mites and commit to a day for testing, either individually or through beekeeping organizations, and report your data at [www.mitecheck.com](http://www.mitecheck.com). For more information contact Mite-A-Thon at 415-362-1137 or visit <http://www.pollinator.org/miteathon>.